

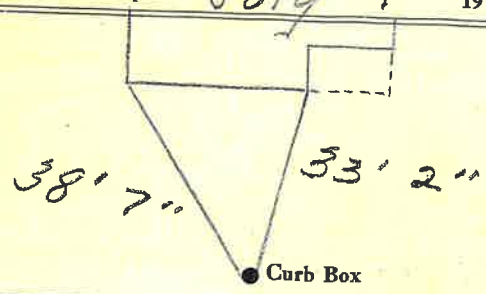
LABOR AND MATERIALS

1	Copper Lead	Connection	3/4"	\$
1	Curb	Cock Valve T.S. & V.	3/4 in.	\$
1	Service box	Short 3 1/2 x 4 1/2		
	Old returned	Long 4 1/2 x 5 1/2		
		Buff or Rdway		\$
37	Ft.	Copper G.I. C.I.	3/4 in. Pipe at	\$
	Nipples	in. at		\$
	Bushings	to in. at		\$
	Red'g Inc'g	Coupl'gs to in. at		\$
	Union	in. at		\$
	Meter	in. at		\$
	Lead Joints	at		\$
	Compound Joints	at		\$
	Maintenance Foreman			\$
	Hrs. Water Maint. Man-1	at		\$
	Hrs. Water Maint. Man-2	at		\$
	Hrs. Garage Foreman	at		\$
	Hrs. Labor	at		\$
	Hrs. Compressor	at		\$
	Compensation Ins. at \$	per C		\$
	Trucking			\$
	Pav't Patch			\$
	Tap by Gifford & Co.			\$
	7-1-60.			\$
	O'head			\$

Webster -St-  
-Pl-  
Ave. No. 41

Name of Owner  
Starin + Dorothy Greene

Labor and Mat'l. Report July 1 1960



12" Main Elev. of Main at tap 4'

Gate at • • Gate at  
37' to main

• Curb Box

Tap on side of Main,

TAX ID # 302.11-6-5