

LABOR AND MATERIALS

1	Copper Lead	Connection		\$ 1.23
1	Curb	Cock Valve T. S. & V.	3/4 in	\$ 1.68
1	Service Box	Old returned	Short 3 1/2 x 4 1/2 Long 4 1/2 x 5 1/2 Buff. or Rdway	\$ 1.75
12	Ft.	3/4 in.	Copper Galv Iron Cast Iron	Pipe at 15 \$ 1.80
	Nipples	in. at		\$
	Bushings	to in. at		\$
	Red'g Inc'g	Couplings to in. at		\$
	Union	in. at		\$
	Meter	in. at		\$
	Lead Joints	at		\$
	Leadite Joints	at		\$
	Hrs. Foreman	at		\$
3	Hrs. Chauffeur	at 6 2/3		\$ 1.88
1	Hrs. Tapper	at		\$ 4.37
	Hrs. Labor	at		\$
8	Hrs. Labor	at 45		\$ 3.60
1	Hrs. Compressor	at 8 1/2		\$.88
	Compensation Ins.			\$ 30
	Trucking			\$ 1.00
	Builders Use of Water	1/2 patch Sewer		\$ 2.50
	Toply Pump			\$
				\$
				\$
				\$
				\$
				\$ 20.99

51 - 1938

Webster

St. 64
Pt. Ave. No. 64

Name of Owner

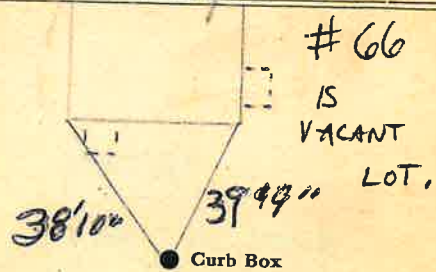
W. K. My Mason

KH 6-6-2001

Labor and Mat'l. Report

Aug. 11

1938



12" Main

Elev. of Main at tap 4 1/2'

Gate at ●

● Gate at

12' to main

● Curb Box

New house

TAX ID# 302.12-2-12

M