

Labor and Materials

1	Copper Lead	Connection	3/4	\$ 1.48
.....	Curb	{ Cock Valve T.S.&V. }in\$
1	Service Box	{ Short 3 1/2 x 4 1/2 Long 4 1/2 x 5 1/2 }		\$ 1.50
.....	Old returned	{ Bush or Rawer }	\$
21	Ft. 3/4 in.	{ Copper Galv. Iron Cast Iron }	Pipe at	\$ 3.78
.....	Nipplesin. at	\$
.....	Bushingstoin. at	\$
.....	Red'g Inc'g	{ Couplingstoin. at\$
.....	Unionin. at	\$
.....	Meterin. at	\$
.....	Lbs. Br. Stone	at	\$
.....	Lbs. Sand	at	\$
.....	Bags Cement	at	\$
.....	Paving Brick	{ Mack Red Asphalt }	at\$
.....	Lead Joints	at	\$
.....	Leadite Joints	at	\$
1	Hrs. Foreman	at		\$ 63
.....	Hrs. Common Labor	at	\$
.....	Hrs. Common Labor	at	\$
.....	Hrs. Mason	at	\$
.....	Hrs. Masons Helper	at	\$
.....	Hrs. Compressor	at	\$
.....	Compensation Ins			\$.02
.....	Trucking			\$ 1.00
.....	Builders Use of Water\$

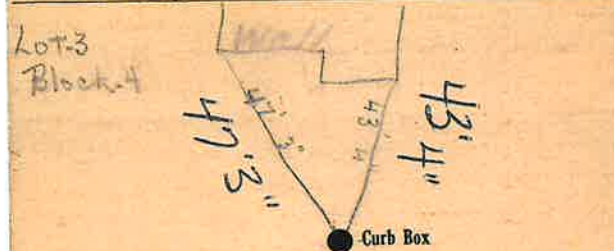
Total \$ 8.21

32-76

Labor and Material Report

7/7/32 19

no 18 western ave North



12" Main Elev. of Main at tap 5'

Gate at ● Gate at ●

21' to MAIN

● Curb Box

new house

(Cary)

TAX ID # 302.19-12-9

OK [Signature]