

LABOR AND MATERIALS

1	Copper Lead	Connection	$\frac{3}{4}$ "	\$	3.08
1	Curb	Cock Valve T.S. & V.	$\frac{3}{4}$ in.	\$	3.89
1	Service box Old returned	Short $3\frac{1}{2}$ x $4\frac{1}{2}$ Long $4\frac{1}{2}$ x $5\frac{1}{2}$ Buff or Rdway		\$	4.32
42	Ft. $\frac{3}{4}$ in.	Copper C.I. Pipe at	45	\$	18.90
	Nipples	in. at		\$	
	Bushings	to in. at		\$	
	Red'g Inc'g	Coupl'gs to in. at		\$	
	Union	in. at		\$	
	Meter	in. at		\$	
	Lead Joints at			\$	
	Compound Joints at			\$	
	Maintenance Foreman			\$	
2	Hrs. Water Maint. Man-1 at			\$	
	Hrs. Water Maint. Man-2 at	16.13		\$	3.23
	Hrs. Garage Foreman at			\$	
	Hrs. Labor at			\$	
1	Hrs. Compressor at			\$	1.50
	Compensation Ins. at \$	5.686 per C		\$	1.8
	Trucking			\$	1.50
	Pay't Patch	outside		\$	
	Tap	July 31-56		\$	
	Gr. for Dr. Malle			\$	
	O'head			\$	
				\$	36.60

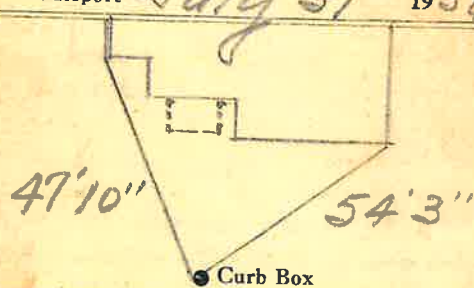
to Rebuild 8.50
28.10

(North) ✓

Western Ave. St. No. 32

Name of Owner
Mozal

Labor and Mat'l. Report July 31 1956



12" Main Elev. of Main at tap 2'

Gate at • Gate at

42' to main

• Curb Box

10/22 - Not on map