

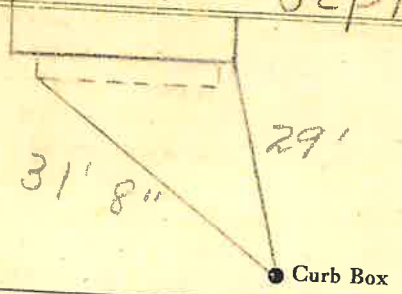
LABOR AND MATERIALS

1	Copper Lead	Connection	3/4"	\$	2.71
1	Curb	Cock Valve T.S.&V.	3/4 in.	\$	3.83
1	Service box Old returned	Short 3 1/2 x 4 1/2 Long 4 1/2 x 5 1/2 Buff or Rdway		\$	4.69
11	Ft. in.	Copper G.I. C.I. Pipe at	45	\$	4.95
	Nipples	in. at		\$	
	Bushings	to in. at		\$	
	Red'g Inc'g	Coupl'gs to in. at		\$	
	Union	in. at		\$	
	Meter	in. at		\$	
	Lead Joints	at		\$	
	Compound Joints	at		\$	
3	Maintenance Foreman		1.51	\$	4.53
	Hrs. Water Maint. Man-1	at		\$	
6	Hrs. Water Maint. Man-2	at	1.24	\$	7.44
	Hrs. Garage Foreman	at		\$	
6	Hrs. Labor	at	1.13	\$	6.78
	Hrs. Compressor	at		\$	
	Compensation Ins.	at \$4.29 per C		\$	80
	Trucking			\$	1.50
	Pav't Patch			\$	6.72
	Tap by Gifford 9-2-55				
	O'head			\$	
				\$	43.95

St. William
Pl. 26
Ave. No. 26

Name of Owner Sullivan

Labor and Mat'l. Report Sept. 2 19 55



4" Main Elev. of Main at tap 4 1/2'

Gate at ● Gate at ●
11' to main

● Curb Box

TAX ID # 302.16-15-39