

LABOR AND MATERIALS

Copper	Connection	1/2"	\$			
Lead							
Curb	Cock	3/4"	in.			
	Valve						
	T. S. & V.						
Service box	Short 3 1/2 X 4 1/2	\$				
Old returned				Long 4 1/2 X 5 1/2			
4 Ft.	in.	Copper	Pipe at			
					G.I.		
						C.I.	
Nipples	in.	at	\$			
Bushings	to	in.	at	\$		
Red'g	Inc'g	Coupl'gs	to	in.	at	\$
Union							
Meter	in.	at	\$			
Lead Joints	at	\$				
Compound Joints	at	\$				
Hrs. Water Maint. Man—1	at	\$				
Hrs. Water Maint. Man—2	at	\$				
Hrs. Labor—	at	\$				
Hrs. Labor—	at	\$				
Hrs. Compressor	at	\$				
Compensation Ins.	at \$	per C	\$			
Trucking	\$					
Pav't Patch	\$					
O'head	\$					
			\$			

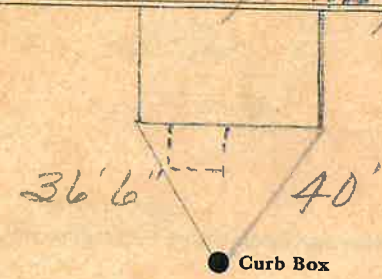
St.
Pl.
Ave. No. 41

William

Name of Owner

Labor and Mat'l. Report

Sept 22 1922



4" Main

Elev. of Main at tap 9 1/2'

Gate at ●

● Gate at

4' to main

● Curb Box

TAX ID # 302.16-17-6