

### LABOR AND MATERIALS

1	Copper	{ Connection	\$ 1.23	
	Lead			
1	Curb	{ Cock Valve	\$ 1.68	
		{ T. S. & V. } 3/4 in.		
1	Service Box	}	\$ 1.54	
	Old returned			Short 3 1/2 x 4 1/2
				Long 4 1/2 x 5 1/2
		Buff. or Rdway		
11	Ft. 3/4 in.	{ Copper	\$ 1.87	
		{ Galv Iron		
		{ Cast Iron		
	Nipples	in. at	\$	
	Bushings	to in. at	\$	
	Red'g Inc'g	{ Couplings to in. at	\$	
	Union	in. at	\$	
	Meter	in. at	\$	
	Lead Joints	at	\$	
	Leadite Joints	at	\$	
	Hrs. Foreman	at	\$	
5	Hrs. Chauffeur	at	\$ 3.12	
	Hrs. Tapper	at	\$	
6	Hrs. Labor	at	\$ 2.70	
	Hrs. Labor	at	\$	
	Hrs. Compressor	at	\$	
	Compensation Ins.		\$ 0.18	
	Trucking		\$ 1.00	
	Builders Use of Water		\$	
	Tap by Penac		\$	
			\$	
			\$	
			\$	
			\$ 13.32	

Tap made at time of deaunting main. Hepatch  
Billed as # 2 of 1940. on Jan 11 1940

6 - - - 1940

St. 50  
Pt.  
Ave. No. 40

William

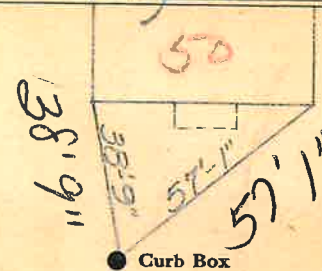
Name of Owner

Jamison, Geo. S.

Labor and Mat'l. Report

May 4

1939



4" Main

Elev. of Main at tap. 4'

Gate at ●

● Gate at

11' to main

● Curb Box

TAX ID # 302.16-16-15

old shut off