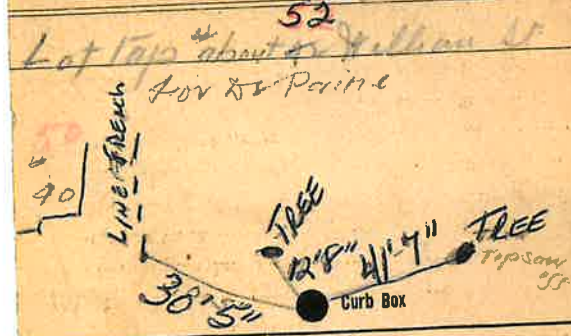


Labor and Materials

Lead Connection $\frac{1}{2}$ "	\$
Curb Cock	\$
Service Box (Short $3\frac{1}{2}$ x $4\frac{1}{2}$)	\$
Old returned (Long $4\frac{1}{2}$ x $6\frac{1}{2}$)	\$
8 Ft. $\frac{3}{4}$ in. G. I. Pipe at	\$
Nipples.....in. at	\$
Bushings.....to.....in. at	\$
Red'g Coup.....to.....in. at	\$
Inc'g Coup.....to.....in. at	\$
Union.....in. at	\$
Meter.....in. at	\$
Cu. Yds. Br. Stone at	\$
Cu. Yds. Sand at	\$
Bags Cement at	\$
Paving Brick { Mack Red Asphalt } at	\$
2 Hrs. Foreman at	\$
8 Hrs. Common Labor at	\$
Hrs. Mason at	\$
Hrs.....at	\$
Hrs.....at	\$
Hrs.....at	\$
Pro. Builders' Use of Water	\$
Truck 1.00	\$
.....at	\$
.....at	\$
.....at	\$
Total	\$	10.85



4 Main Elev. of Main at tap 3'

Gate at $3\frac{1}{4}$ GI 8' to MAIN Gate at

● Curb Box

10/22 - not on map