

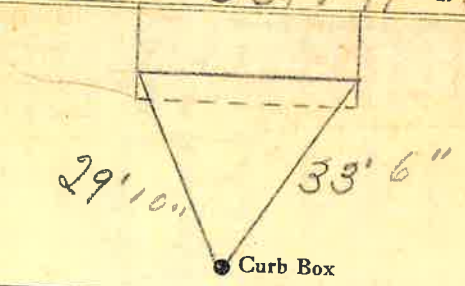
LABOR AND MATERIALS

1	Copper Lead	Connection	$\frac{3}{4}$ "	\$ 2.71
1	Curb	Cock Valve T. S. & V.	$\frac{3}{4}$ in.	\$ 3.83
1	Service box Old returned	Short $3\frac{1}{2}$ x $4\frac{1}{2}$ Long $4\frac{1}{2}$ x $5\frac{1}{2}$ Buff or Rdway		\$ 4.69
12	Ft. $\frac{3}{4}$ in.	Copper G.I. } Pipe at	45	\$ 5.40
	Nipples	in. at		\$
	Bushings	to in. at		\$
	Red'g } Inc'g }	Coupl'gs	to in. at	\$
	Union	in. at		\$
	Meter	in. at		\$
	Lead Joints	at		\$
	Compound Joints	at		\$
	Maintenance Foreman			\$
	Hrs. Water Maint. Man-1	at		\$
10	Hrs. Water Maint. Man-2	at	1.24	\$ 12.40
	Hrs. Garage Foreman	at		\$
14	Hrs. Labor	at	1.13	\$ 15.82
	Hrs. Compressor	at		\$
	Compensation Ins.	at \$ 4.29 per C		\$ 1.21
	Trucking			\$ 1.50
	Pav't Patch			\$ 8.96
	Tap by Giggard	10-11-55		\$
	O'head			\$
				\$ 56.52

St. William
Pl. Barnes
Ave. No. 10

Name of Owner Barnes

Labor and Mat'l. Report Oct. 11 1955



4" Main Elev. of Main at tap 4 1/2'

Gate at • Gate at •

12' to main

• Curb Box

TAX ID# 302.16-15-31