

LABOR AND MATERIALS

1	Copper	Connection	3/4"	\$	
1	Lead			\$	
1	Curb	Cock Valve T.S. & V.	3/4 in. Or seal.	\$	
1	Service box			Short 3 1/2 x 4 1/2 Long 4 1/2 x 5 1/2	\$
7	Old returned				Buff or Rdway
34	Ft. 3/4 in.	Copper } G.I. } C.I. }	Pipe at	\$	
	Nipples			in. at	\$
	Bushings			to in. at	\$
	Red'g } Inc'g }	Coupl'gs.	to in. at	\$	
	Union			in. at	\$
	Meter	in. at	\$		
	Lead Joints	at	\$		
	Compound Joints	at	\$		
	Maintenance Foreman		\$		
	Hrs. Water Maint. Man	1 at	\$		
	Hrs. Water Maint. Man	2 at	\$		
	Hrs. Garage Foreman	at	\$		
	Hrs. Labor	at	\$		
	Hrs. Compressor	at	\$		
	Compensation Ins.	at \$ per C	\$		
	Trucking		\$		
	Pay't Patch		\$		

Tap by Giggord & Co.  
11-4-64.

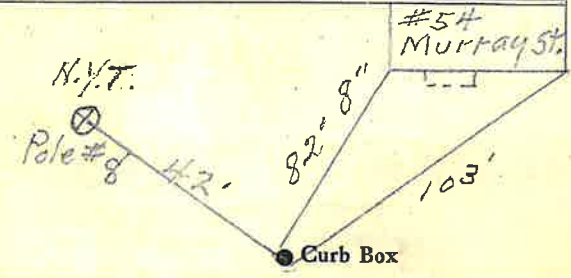
O'head  
Tap changed over from old 8" MAIN to new 12" MAIN

Dec-1973

St. PL  
Ave. No. 7

Name of Owner  
Chas. Johnson.

Labor and Mat'l. Report Nov. 4 1964



12"  
8"  
Main

Elev. of Main at tap 5'

Gate at TAX ID # 309.12-12-34 7' to main Gate at

● Curb Box

Curb box for Chas. Johnson on Willis St. Measured from # 54 Murray St.

LSM-5C-3-10-61

TAP: 405 24 St.