

Labor and Materials

Copper	Connection	3	\$ 1.33
Lead		4	
Curb	Cock Valve	3	\$ 1.58
	P.S.C.V.	4	
Service Box	Short 3 1/2 x 4 1/2		\$ 1.36
Old returned	Long 4 1/2 x 5 1/2		
	Buff. or Rdwex		
19 Ft.	Copper Pipe at		\$ 1.81
	Cast Iron		
Nipples	in. at		\$
Bushings	to in. at		\$
Red'g Inc'g	Couplings to in. at		\$
Union	in. at		\$
Meter	in. at		\$
Lbs. Br. Stone	at		\$
Lbs. Sand	at		\$
Bags Cement	at		\$
Paving Brick	Mack Red Asphalt at		\$
Lead Joints	at		\$
Leadite Joints	at		\$
3 Hrs.	Foreman at		\$ 1.88
4 Hrs.	Common Labor at	Tapper	\$ 2.50
8 Hrs.	Common Labor at		\$ 3.60
Hrs.	Mason at		\$
Hrs.	Masons Helper at		\$
Hrs.	Compressor at		\$
Compensation Ins			\$ 25
Trucking			\$ 1-
Builders Use of Water	Patch		\$ 5-

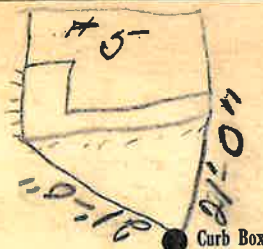
Total \$ 20.31

33-21

Labor and Material Report

May 10 1933

5 Wilmet St



6 Main

Elev. of Main at tap 4 1/2

Gate at

19' to main Gate at

Curb Box

TAX ID # 309.7-8-8

old Tap disconnected

[Handwritten initials]

[Handwritten mark]