

Labor and Materials

Copper } Connection		\$ 3.20
Lead } Connection		
Curb } Cock	} in.	\$ 1.00
Valve		
T. S. & V.		
Service Box } Short 3 1/2 x 4 1/2	}	\$ 1.30
Old returned } Long 4 1/2 x 5 1/2		
	Buff. or Rdway	
8 Ft. 3/4 in. } Copper	} Pipe at	\$ 17.6
Nipples	in. at	\$
Bushings	3/4 to 1/2 in. at	\$ 1.0
Red'g } Couplings	to in. at	\$
Inc'g }		
Union	in. at	\$
Meter	in. at	\$
Lbs. Br. Stone	at	\$
Lbs. Sand	at	\$
Bags Cement	at	\$
Paving Brick } Mack	} at	\$
	Asphalt	
Lead Joints	at	\$
Leadite Joints	at	\$
1 Hrs. Foreman	at 6 1/2	\$ 1.63
4 Hrs. Common Labor	at 5-0	\$ 2.00
4 Hrs. Common Labor	at 10/8	\$ 1.63
Hrs. Mason	at	\$
Hrs. Mason's Helper	at	\$
Hrs. Compressor	at	\$
Compensation Ins.		\$ 1.1
Trucking		\$ 1.00
Builders' Use of Water		\$

Total \$12.73

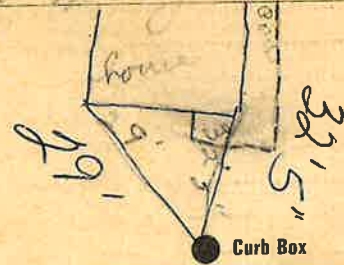
27-107

Labor and Material Report

Oct 15

19

220 / 9 ft long etc



4" Main

Elev. of Main at tap 5'

Gate at

Gate at

8' to main

Curb Box

Old top shut off

TAX ID # 303.13-2-19