

LABOR AND MATERIALS

Copper } Connection		\$
Lead } Cock		
	in.	\$
Curb } Valve		
	T. S. & V.	
Service box } Short 3 1/2 x 4 1/2		
Old returned } Long 4 1/2 x 5 1/2		
	Buff or Rdway	\$
26 Ft. in. } Copper		
	C.I.	
	C.I.	\$
Nipples	in. at	\$
Bushings	to in. at	\$
Red'g } Coupl'gs	to in. at	\$
Inc'g }		
Union	in. at	\$
Meter	in. at	\$
Lead Joints	at	\$
Compound Joints	at	\$
Maintenance Foreman		\$
Hrs. Water Maint. Man-1	at	\$
Hrs. Water Maint. Man-2	at	\$
Hrs. Garage Foreman	at	\$
Hrs. Labor	at	\$
Hrs. Compressor	at	\$
Compensation Ins.	at \$ per C	\$
Trucking		\$
Pav't Patch		\$
<i>Job Done</i>		
<i>E T WILLET & CO.</i>		
O'head		\$
		\$

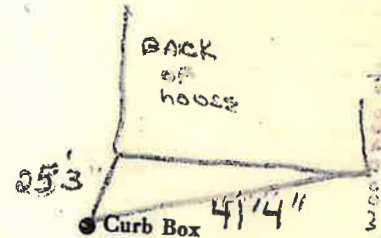
2-4 Woodard

St. Pl. Ave. No. 2-4

Name of Owner

TONY PAPPAS

Labor and Mat'l. Report Aug 25, 1982



6" Main

South st

Elev. of Main at tap 5'

Gate at ●

● Gate at

26' to main

● Curb Box

TAX ID # 309.16-5-6