

LABOR AND MATERIALS

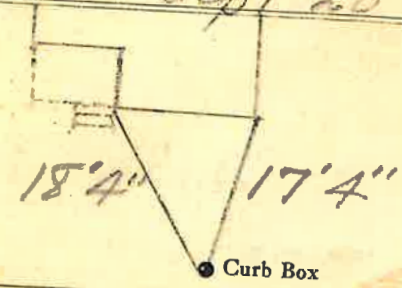
1	Copper	} Connection	3/4"	\$ 148
	Lead			
1	Curb	} Cock Valve T. S. & V.	3/4 in.	\$ 179
1	Service box			
	Old returned			
			Short 3 1/2 x 4 1/2	\$ 130
			Long 4 1/2 x 5 1/2	
			Buff or Rdway	
27	Ft. 3/4 in.	} Copper G. I. C. I.	} Pipe at	\$ 464
	Nipples	in. at	\$	
	Bushings	to in. at	\$	
	Red'g	} Coupl'gs	to in. at	\$
	Inc'g			
	Union	in. at	\$	
	Meter	in. at	\$	
	Lead Joints	at	\$	
	Compound Joints	at	\$	
6	Maintenance Foreman		\$	188
	Hrs. Water Maint. Man-1	at	\$	
	Hrs. Water Maint. Man-2	at	\$	
	Hrs. Garage Foreman	at	\$	
4	Hrs. Labor	at	\$	180
	Hrs. Compressor	at	\$	
	Compensation Ins. at \$	per C.	\$	12
	Trucking		\$	100
	Pav't Patch		\$	250
			\$	
			\$	
			\$	
	O'head		\$	
			\$	1653

30115

Woodard St. Pl. Ave. No. 19

Name of Owner R Stephenson

Labor and Mat'l. Report Sept 20 1937



6" Main Elev. of Main at tap 2'

Gate at • Gate at •

27' to MAIN

• Curb Box

TAX ID # 309.15-9-15