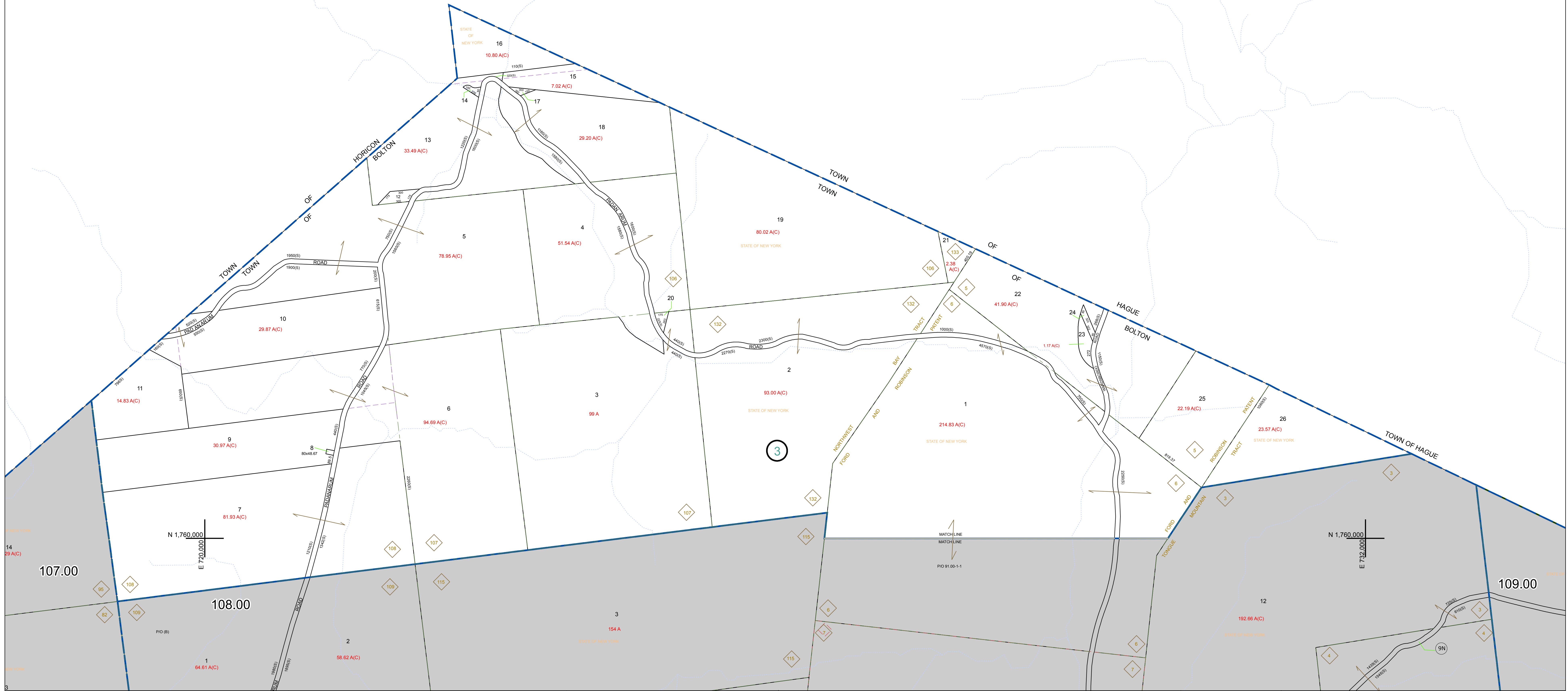


N 1,768,000
E 732,000

N 1,768,000
E 732,000

N 1,760,000
E 720,000

N 1,760,000
E 732,000



PREPARED BY:
WARREN COUNTY REAL PROPERTY SERVICES
 LAKE GEORGE, NEW YORK

REVISION TABLE			
DATE	MADE BY	CHANGES OR ADDITIONS	

SPECIAL DISTRICTS	

LEGEND	
PROPERTY LINE	—
ORIGINAL LOT LINE	- - -
RAILROAD	- . - . -
STREAM OR DITCH	~
ROAD OR RAILWAY BNDY	---
COUNTY LINE	---
TOWN LINE	---
VILLAGE LINE	---
BLOCK LIMIT	---
GREAT LOT LINE	---
SCHOOL DISTRICT LINE	---
FIRE DISTRICT LINE	---
DENOTES COMMON OWNER	---
TAX MAP BLOCK NUMBER	---
TAX MAP PARCEL NUMBER	---
FILED PLAN LOT NUMBER	---

LEGEND	
GREAT LOT NUMBER	175 A
CALCULATED ACREAGE	78 (C)
DEED ACREAGE	175 A
DEED DIMENSION	225 (S)
DEED DIMENSION	173.2

NORTH
 COORDINATES BASED ON
 NEW YORK STATE PLANE COORDINATE SYSTEM
 EASTERN ZONE NAD 83

SHEET INDEX		

TAX MAP
TOWN OF BOLTON
 WARREN COUNTY, NEW YORK
 091.00

scale: 1 inch = 400 feet
 DATE PRINTED: Apr 11, 2011