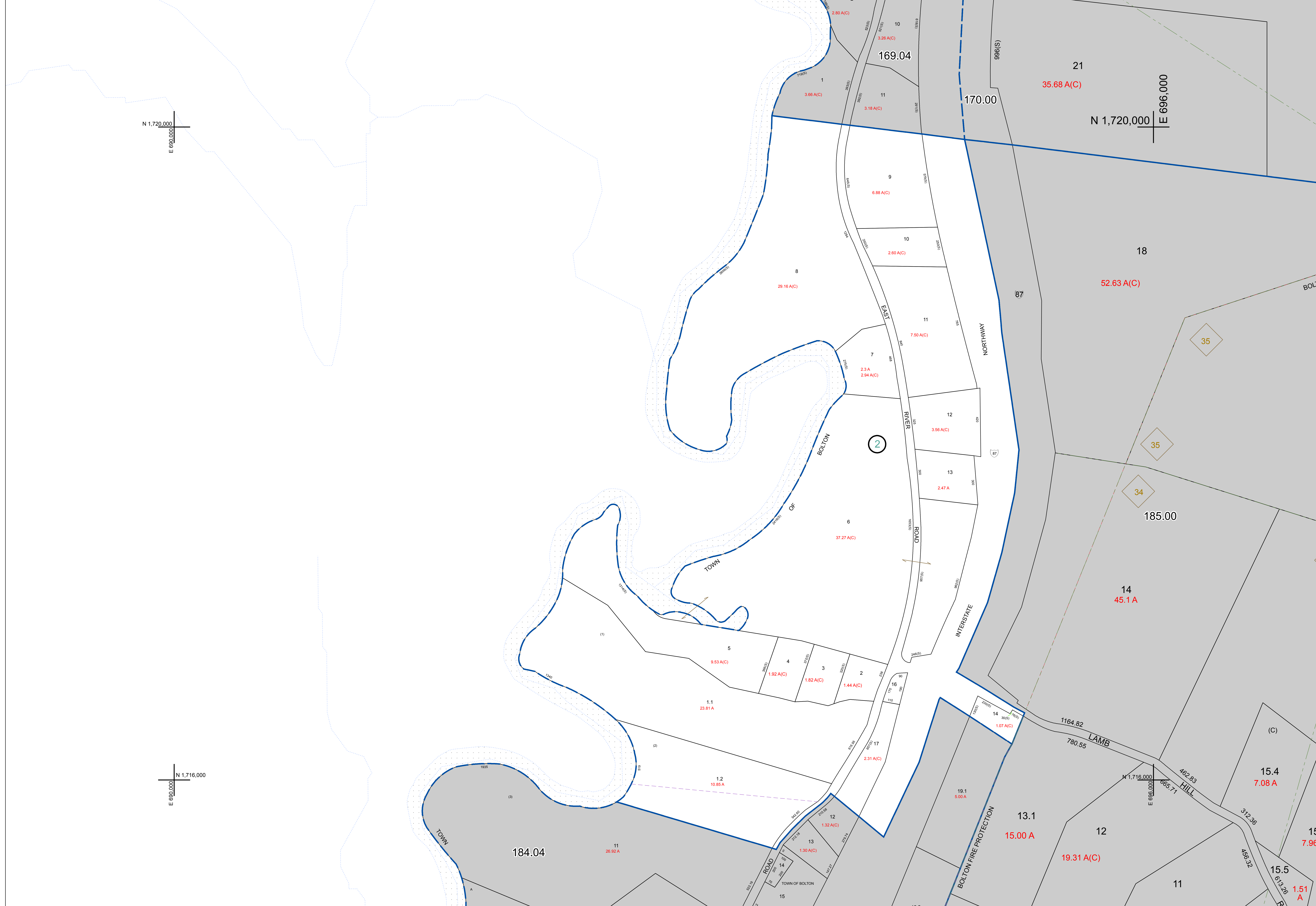



N 1,720,000
E 690,000

N 1,720,000
E 696,000

N 1,716,000
E 690,000




 PREPARED BY:
WARREN COUNTY REAL PROPERTY SERVICES
 LAKE GEORGE, NEW YORK

REVISION TABLE		
DATE	MADE BY	CHANGES OR ADDITIONS

SPECIAL DISTRICTS	

PROPERTY LINE		TOWN LINE		FIRE DISTRICT LINE	
ORIGINAL LOT LINE	--- (dotted)	VILLAGE LINE	--- (dashed)	DEOTES COMMON OWNER	--- (dashed)
RAILROAD	--- (dashed)	BLOCK LIMIT	--- (dashed)	TAX MAP BLOCK NUMBER	--- (dashed)
STREAM OR DITCH	--- (dotted)	GREAT LOT LINE	--- (dashed)	TAX MAP PARCEL NUMBER	--- (dashed)
ROAD OR RAILWAY BNDY	--- (dotted)	SCHOOL DISTRICT LINE	--- (dashed)	FILED PLAN LOT NUMBER	--- (dashed)
COUNTY LINE	--- (dotted)				

LEGEND	
GREAT LOT NUMBER	173.2
CALCULATED ACREAGE	173.2
DEED ACREAGE	173.2
SCALED DIMENSION	173.2
DEED DIMENSION	173.2

NORTH
 COORDINATES BASED ON
 NEW YORK STATE PLANE COORDINATE SYSTEM
 EASTERN ZONE NAD 83

184.04	170.00
185.00	185.00
184.04	185.00

SHEET INDEX
 scale: 1 inch = 200 feet
 TAX MAP
TOWN OF BOLTON
 WARREN COUNTY, NEW YORK
 DATE PRINTED: Apr 11, 2011

THIS DOCUMENT PREPARED FOR TAX PURPOSES ONLY