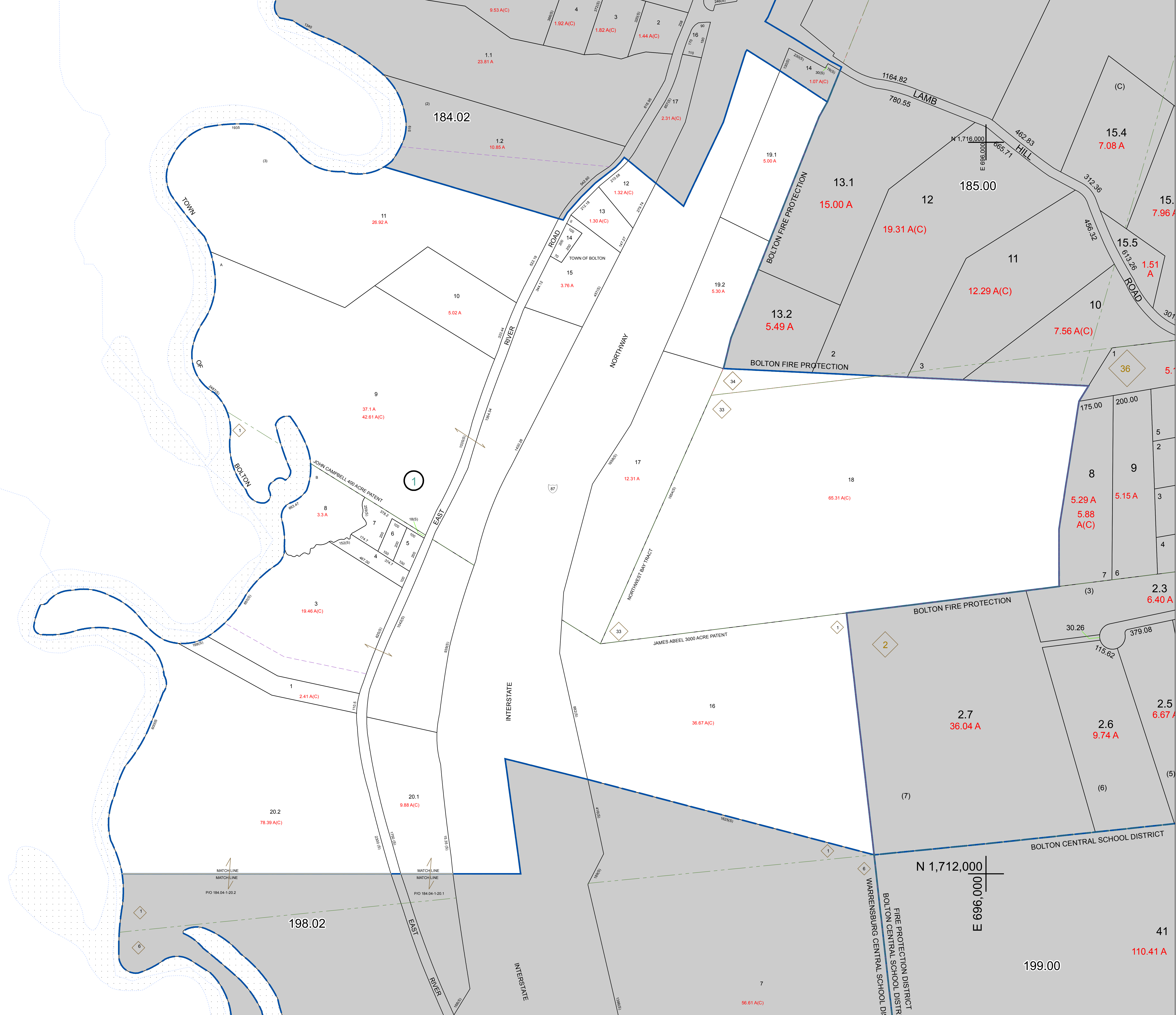


N 1,716,000
E 690,000

N 1,712,000
E 690,000



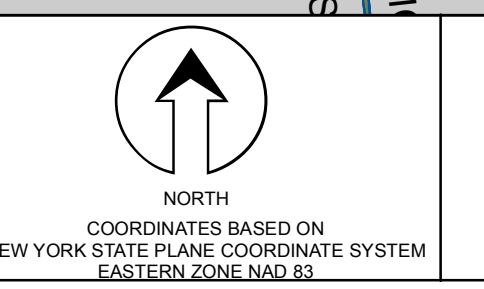
PREPARED BY:
WARREN COUNTY REAL PROPERTY SERVICES
LAKE GEORGE, NEW YORK

REVISION TABLE		
DATE	MADE BY	CHANGES OR ADDITIONS

SPECIAL DISTRICTS	
PROPERTY LINE	---
ORIGINAL LOT LINE	---
RAILROAD	---
STREAM OR DITCH	---
ROAD OR RAILWAY ENDY	---
COUNTY LINE	---

LEGEND	
TOWN LINE	---
VILLAGE LINE	---
BLOCK LIMIT	---
GREAT LOT LINE	---
SCHOOL DISTRICT LINE	---
FIRE DISTRICT LINE	---
DIMOTES COMMON OWNER	---
TAX MAP BLOCK NUMBER	---
TAX MAP PARCEL NUMBER	---
FILED PLAN LOT NUMBER	---

LEGEND	
GREAT LOT NUMBER	78 (C)
CALCULATED ACREAGE	175 A
DEED ACREAGE	225 (S)
SCALED DIMENSION	173.2
DEED DIMENSION	173.2



SHEET INDEX	
184.00	185.00
185.00	186.00
186.00	187.00

TAX MAP
TOWN OF BOLTON
WARREN COUNTY, NEW YORK
scale: 1 inch = 200 feet

184.04
DATE PRINTED: Apr 11, 2011

THIS DOCUMENT PREPARED FOR TAX PURPOSES ONLY