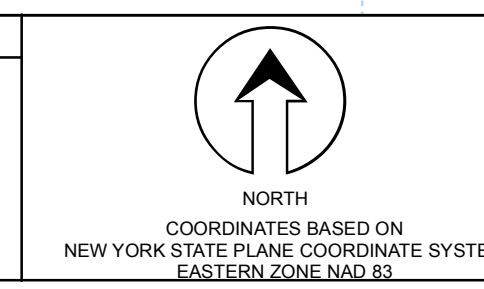

 PREPARED BY:
WARREN COUNTY REAL PROPERTY SERVICES
 LAKE GEORGE, NEW YORK

| REVISION TABLE | | |
|----------------|---------|----------------------|
| DATE | MADE BY | CHANGES OR ADDITIONS |
| | | |

| SPECIAL DISTRICTS | |
|-------------------|--|
| | |

| LEGEND | |
|-----------------------|------------|
| PROPERTY LINE | — |
| ORIGINAL LOT LINE | - - - - - |
| RAILROAD | —+—+—+— |
| STREAM OR DITCH | ~~~~~ |
| ROAD OR RAILWAY ENDY | —+—+—+— |
| COUNTY LINE | —+—+—+— |
| TOWN LINE | —+—+—+— |
| VILLAGE LINE | —+—+—+— |
| BLOCK LIMIT | —+—+—+— |
| GREAT LOT LINE | —+—+—+— |
| SCHOOL DISTRICT LINE | —+—+—+— |
| FIRE DISTRICT LINE | —+—+—+— |
| DENOTES COMMON OWNER | —+—+—+— |
| TAX MAP BLOCK NUMBER | 7 |
| TAX MAP PARCEL NUMBER | 76.00-1-11 |
| FILED PLAN LOT NUMBER | (14) |

| | |
|------------------|---------|
| GREAT LOT NUMBER | 76 (G) |
| CALCULATED ACRES | 175 A |
| DEED ACRES | 225 (S) |
| DEED DIMENSION | 173.2 |



| SHEET INDEX | |
|-------------|--------|
| 224.00 | 227.00 |
| 239.00 | 242.00 |

TAX MAP
TOWN OF BOLTON
 WARREN COUNTY, NEW YORK
 scale: 1 inch = 400 feet

239.00
 DATE PRINTED: Apr 11, 2011

THIS DOCUMENT PREPARED FOR TAX PURPOSES ONLY