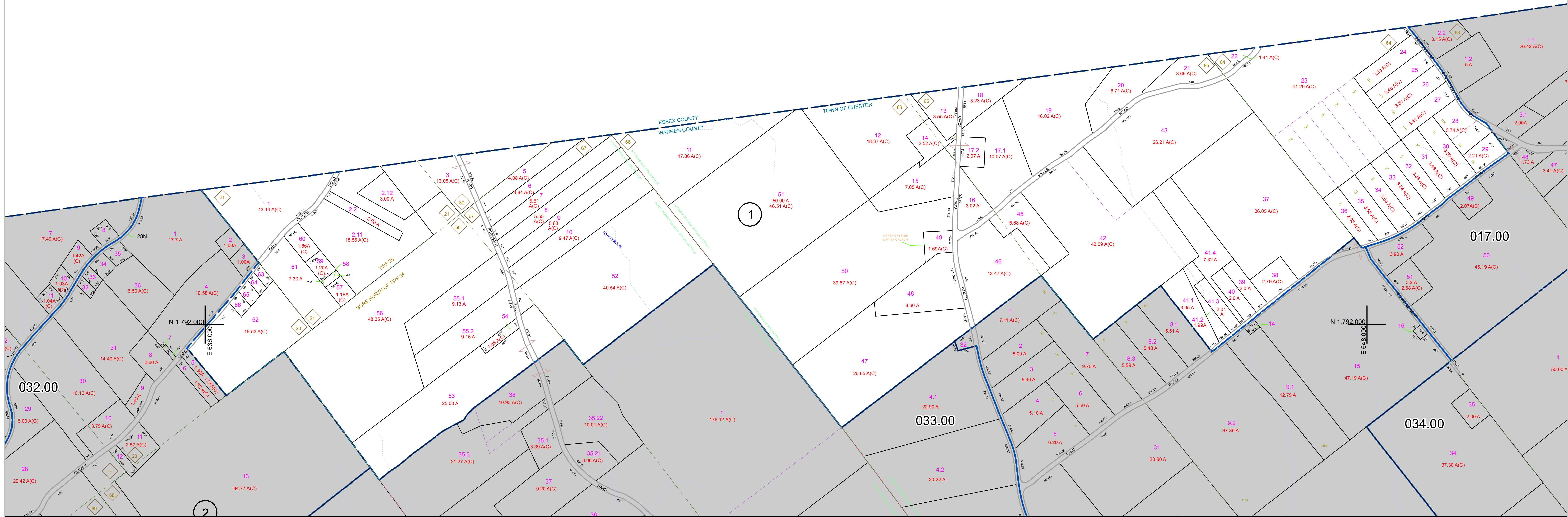



N 1,800,000  
E 6348,000

N 1,800,000  
E 6448,000





**PREPARED BY:**  
**WARREN COUNTY REAL PROPERTY SERVICES**  
 LAKE GEORGE, NEW YORK

REVISION TABLE	
DATE	MADE BY / CHANGES OR ADDITIONS
12/14/2008	P. 21208
	PARCEL 14-00-1-33.2 (CARD SUBDIVISION) ROW 14-00-1-33.1 PARCEL 14-00-1-33.2 CREATED.

SPECIAL DISTRICTS	
PROPERTY LINE	---
ORIGINAL LOT LINE	---
RAILROAD	---
STREAM OR DITCH	---
ROAD OR RAILWAY BNDY	---
COUNTY LINE	---

LEGEND	
TOWN LINE	---
VILLAGE LINE	---
BLOCK LIMIT	---
GREAT LOT LINE	---
SCHOOL DISTRICT LINE	---
FIRE DISTRICT LINE	---
DEMOTES COMMON OWNER	---
TAX MAP BLOCK NUMBER	---
TAX MAP PARCEL NUMBER	---
FILED PLAN LOT NUMBER	---

LEGEND	
GREAT LOT NUMBER	---
CALCULATED ACREAGE	---
DEED ACREAGE	---
DEED DIMENSION	---
DEED DIMENSION	---


 NORTH  
 COORDINATES BASED ON  
 NEW YORK STATE PLANE COORDINATE SYSTEM  
 EASTERN ZONE NAD 83

SHEET INDEX	
032.00	033.00
034.00	017.00

**TAX MAP**  
**TOWN OF CHESTER**  
 WARREN COUNTY, NEW YORK  
 scale: 1 inch = 400 feet  
 DATE PRINTED: Apr 11, 2011

THIS DOCUMENT PREPARED FOR TAX PURPOSES ONLY