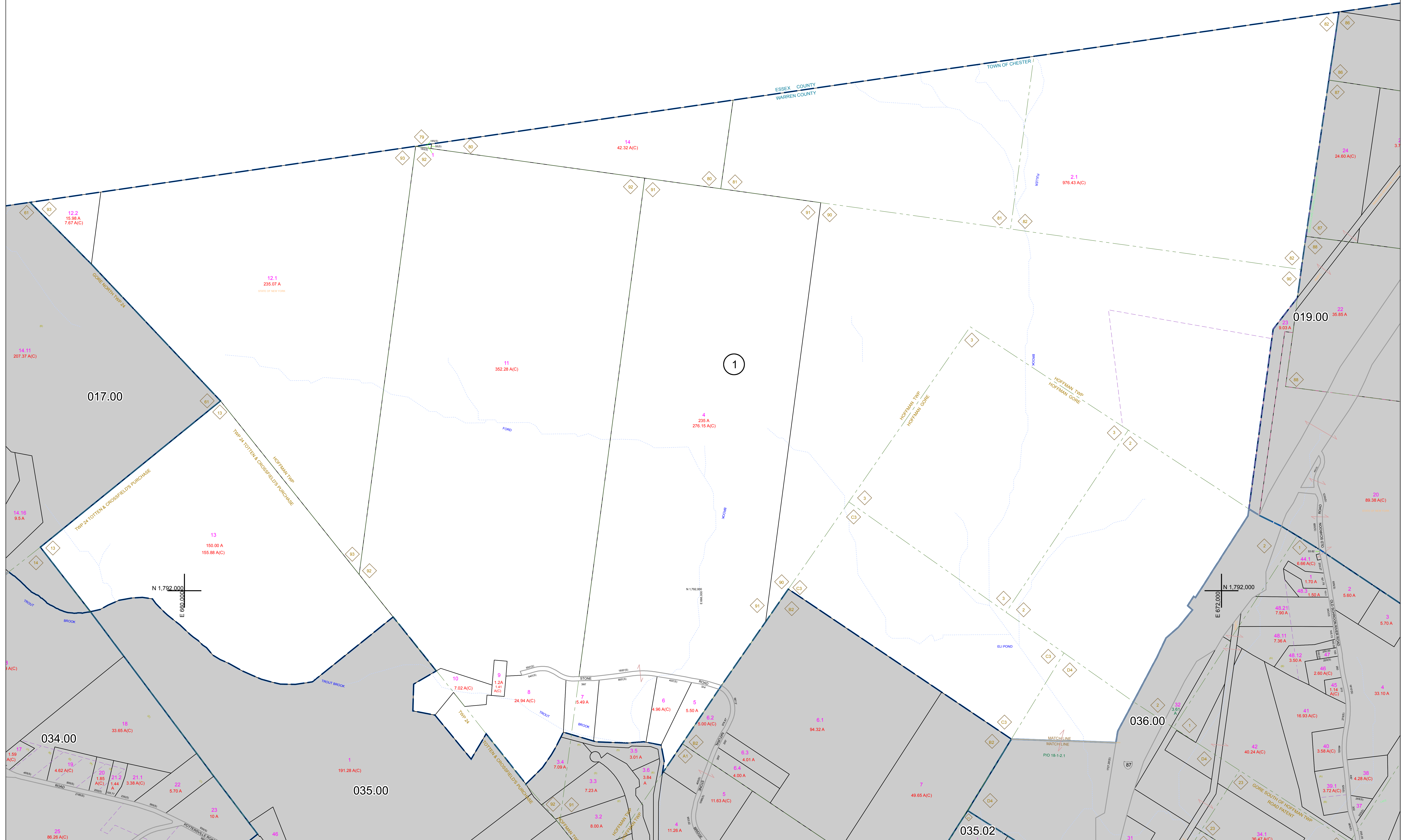



N 1,800,000  
E 660,000

N 1,800,000  
E 672,000



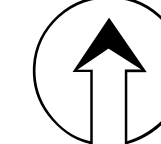
PREPARED BY:  

**WARREN COUNTY REAL PROPERTY SERVICES**  
 LAKE GEORGE, NEW YORK

REVISION TABLE			
DATE	MADE BY	CHANGES OR ADDITIONS	

SPECIAL DISTRICTS	
PROPERTY LINE	---
ORIGINAL LOT LINE	---
RAILROAD	---
STREAM OR DITCH	---
ROAD OR RAILWAY BNDY	---
COUNTY LINE	---

LEGEND	
TOWN LINE	---
VILLAGE LINE	---
BLOCK LIMIT	---
GREAT LOT LINE	---
SCHOOL DISTRICT LINE	---
FIRE DISTRICT LINE	---
DENOTES COMMON OWNER	---
TAX MAP BLOCK NUMBER	---
TAX MAP PARCEL NUMBER	---
FILED PLAN LOT NUMBER	---

TAX MAP	
GREAT LOT NUMBER	78 (C)
CALCULATED ACREAGE	175 A
DEED ACREAGE	225 (B)
SCALED DIMENSION	173.2
DEED DIMENSION	173.2

  
 NORTH  
 COORDINATES BASED ON  
 NEW YORK STATE PLANE COORDINATE SYSTEM  
 EASTERN ZONE NAD 83

SHEET INDEX	
017.00	019.00
018.00	020.00
021.00	022.00
023.00	024.00

**TAX MAP**  
**TOWN OF CHESTER**  
 WARREN COUNTY, NEW YORK  
 scale: 1 inch = 400 feet  
 DATE PRINTED: Apr 11, 2011

THIS DOCUMENT PREPARED FOR TAX PURPOSES ONLY