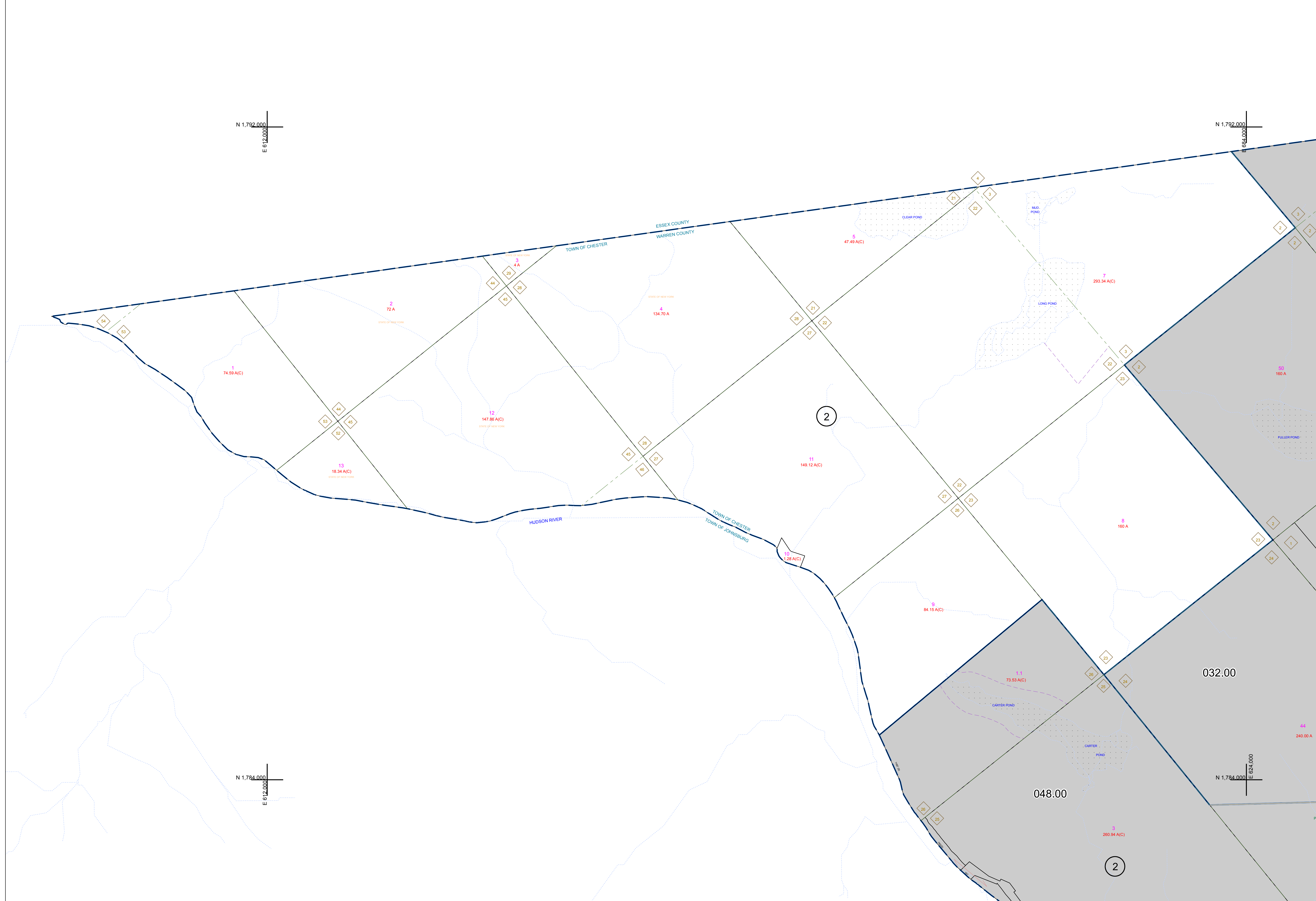



N 1,792,000  
E 612,000

N 1,792,000  
E 600,783

N 1,784,000  
E 612,000

N 1,784,000  
E 624,000



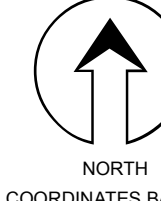

 PREPARED BY:  
**WARREN COUNTY REAL PROPERTY SERVICES**  
 LAKE GEORGE, NEW YORK

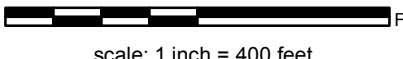
REVISION TABLE		
DATE	MADE BY	CHANGES OR ADDITIONS

SPECIAL DISTRICTS	

LEGEND	
PROPERTY LINE	—
ORIGINAL LOT LINE	- - - -
RAILROAD	—+—+—+—+—
STREAM OR DITCH	~~~~~
ROAD OR RAILWAY BNDY	—+—+—+—+—
COUNTY LINE	—+—+—+—+—
TOWN LINE	—+—+—+—+—
VILLAGE LINE	—+—+—+—+—
BLOCK LIMIT	—+—+—+—+—
GREAT LOT LINE	—+—+—+—+—
SCHOOL DISTRICT LINE	—+—+—+—+—
FIRE DISTRICT LINE	—+—+—+—+—
DENOTES COMMON OWNER	—+—+—+—+—
TAX MAP BLOCK NUMBER	7
TAX MAP PARCEL NUMBER	14
FILED PLAN LOT NUMBER	76.00-1-11

GREAT LOT NUMBER	78 (C)
CALCULATED ACREAGE	175 A
DEED ACREAGE	225 (B)
SCALED DIMENSION	173.2
DEED DIMENSION	173.2


 NORTH  
 COORDINATES BASED ON  
 NEW YORK STATE PLANE COORDINATE SYSTEM  
 EASTERN ZONE NAD 83

TAX MAP  
**TOWN OF CHESTER**  
 WARREN COUNTY, NEW YORK  

 scale: 1 inch = 400 feet

**031.00**  
 SHEET INDEX  
 DATE PRINTED: Apr 11, 2011

THIS DOCUMENT PREPARED FOR TAX PURPOSES ONLY