

32
247.09 A(C)

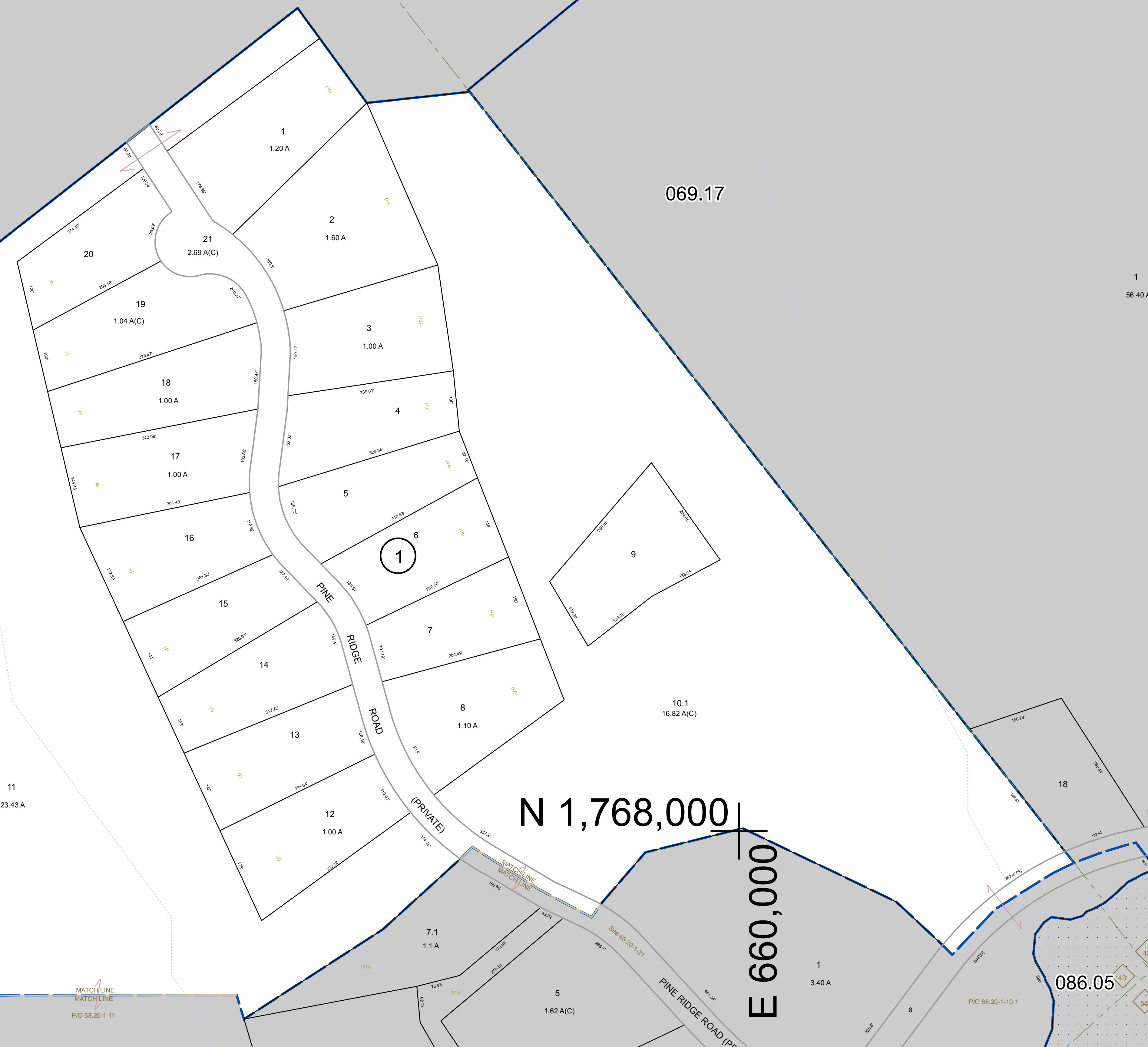
069.00

N 1,770,000
E 667,000

N 1,770,000
E 660,000

068.00

069.17



P/O 85.08-1-1

MATCH LINE

N 1,768,000
E 667,000

085.00

N 1,768,000

E 660,000

085.08

086.05

WARREN COUNTY REAL PROPERTY SERVICES
LAKE GEORGE, NEW YORK

REVISION TABLE

DATE	MADE BY	CHANGES OR ADDITIONS

SPECIAL DISTRICTS

DISTRICT NAME	SYMBOL

LEGEND

SYMBOL	DESCRIPTION

TOWN OF CHESTER
WARREN COUNTY, NEW YORK

PROPERTY LINE	TOWN LINE	FIRE DISTRICT LINE	GREAT LOT NUMBER

TAX MAP
WARREN COUNTY, NEW YORK
068.20
DATE PRINTED: Apr 11, 2011