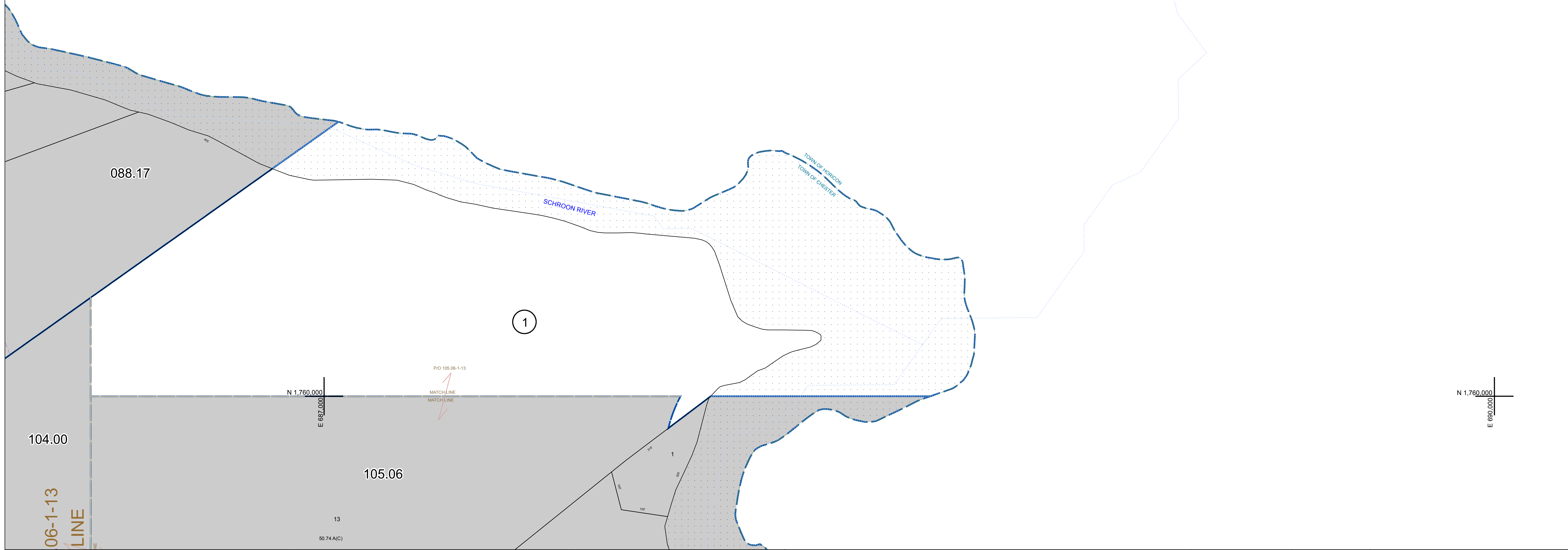


N 1,762,000  
E 687,000


N 1,762,000  
E 680,000



N 1,760,000  
E 687,000

N 1,760,000  
E 680,000

THIS DOCUMENT PREPARED FOR TAX PURPOSES ONLY



PREPARED BY:  
**WARREN COUNTY REAL PROPERTY SERVICES**  
LAKE GEORGE, NEW YORK


REVISION TABLE			
DATE	MADE BY	CHANGES OR ADDITIONS	

SPECIAL DISTRICTS	
PROPERTY LINE	---
ORIGINAL LOT LINE	---
RAILROAD	---
STREAM OR DITCH	---
ROAD OR RAILWAY BNDY	---
COUNTY LINE	---

LEGEND	
TOWN LINE	---
VILLAGE LINE	---
BLOCK LIMIT	---
GREAT LOT LINE	---
SCHOOL DISTRICT LINE	---
FIRE DISTRICT LINE	---
DENOTES COMMON OWNER	---
TAX MAP BLOCK NUMBER	7
TAX MAP PARCEL NUMBER	76.00-1-11
FILED PLAN LOT NUMBER	(14)

GREAT LOT NUMBER	76 (C)
CALCULATED ACREAGE	175 A
DEED ACREAGE	225 (B)
SCALED DIMENSION	173.2
DEED DIMENSION	


NORTH



COORDINATES BASED ON  
NEW YORK STATE PLANE COORDINATE SYSTEM  
EASTERN ZONE NAD 83

SHEET INDEX	
088.17	
088.18	X
088.19	

TAX MAP  
**TOWN OF CHESTER**  
WARREN COUNTY, NEW YORK



scale: 1 inch = 100 feet

**088.18**

DATE PRINTED: Apr 11, 2011