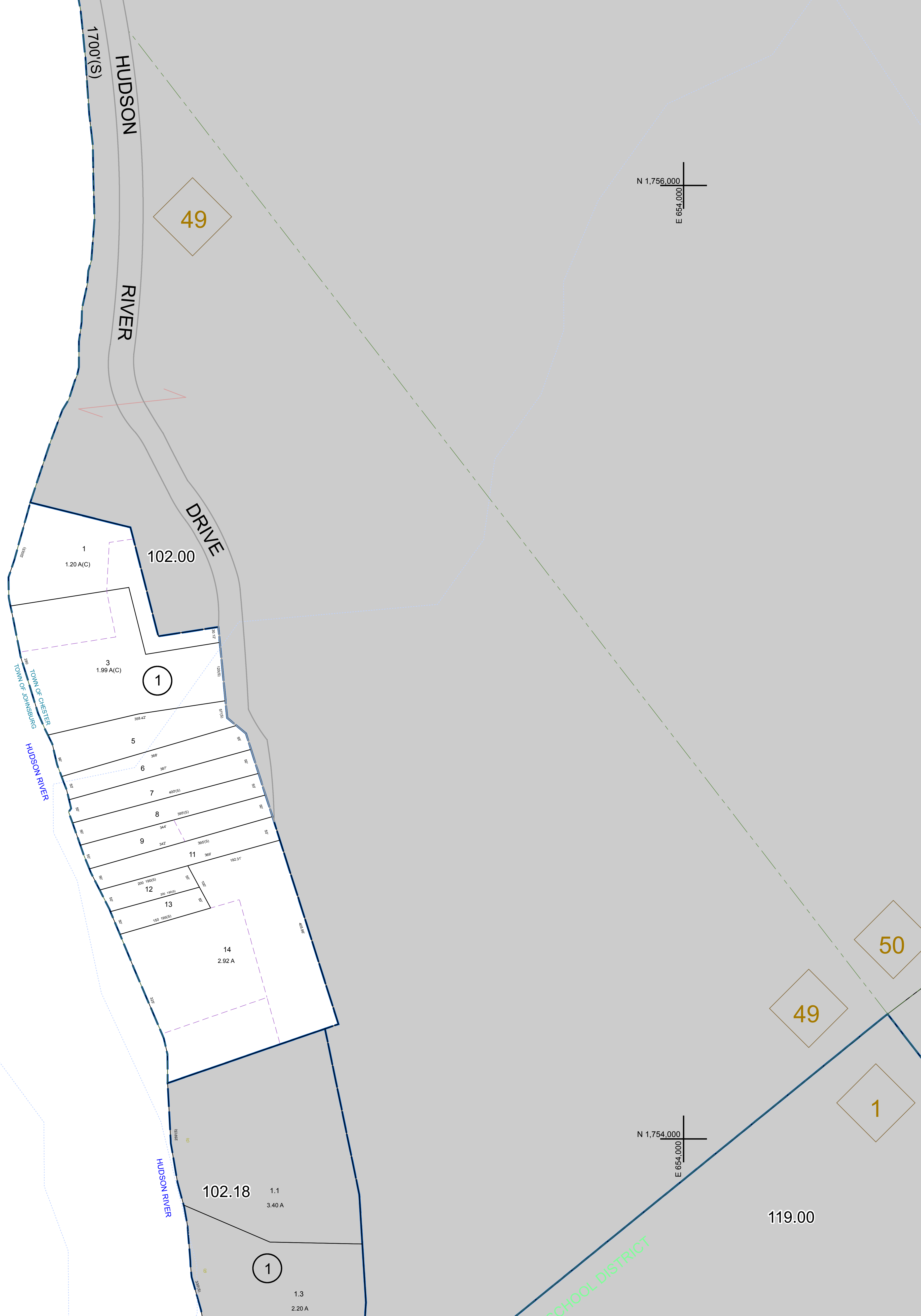


N 1,756,000
E 664,000

N 1,756,000
E 664,000

N 1,754,000
E 664,000

N 1,754,000
E 664,000



WARREN COUNTY REAL PROPERTY SERVICES
LAKE GEORGE, NEW YORK

PREPARED BY:
WARREN COUNTY REAL PROPERTY SERVICES
LAKE GEORGE, NEW YORK

REVISION TABLE			
DATE	MADE BY	CHANGES OR ADDITIONS	

SPECIAL DISTRICTS	

PROPERTY LINE	
ORIGINAL LOT LINE	---
RAILROAD	—+—+—+—
STREAM OR DITCH	~~~~~
ROAD OR RAILWAY BNDY	---
COUNTY LINE	---

TOWN LINE	
VILLAGE LINE	---
BLOCK LIMIT	---
GREAT LOT LINE	---
SCHOOL DISTRICT LINE	---

FIRE DISTRICT LINE	
DISTRICTS COMMON OWNER	---
TAX MAP BLOCK NUMBER	---
TAX MAP PARCEL NUMBER	---
FILED PLAN LOT NUMBER	---

LEGEND	
GREAT LOT NUMBER	◆
CALCULATED ACREAGE	78 (C)
DEED ACREAGE	175 A
SCALED DIMENSION	226 (S)
DEED DIMENSION	173.2

TAX MAP
TOWN OF CHESTER
WARREN COUNTY, NEW YORK

102.14

DATE PRINTED: Apr 11, 2011