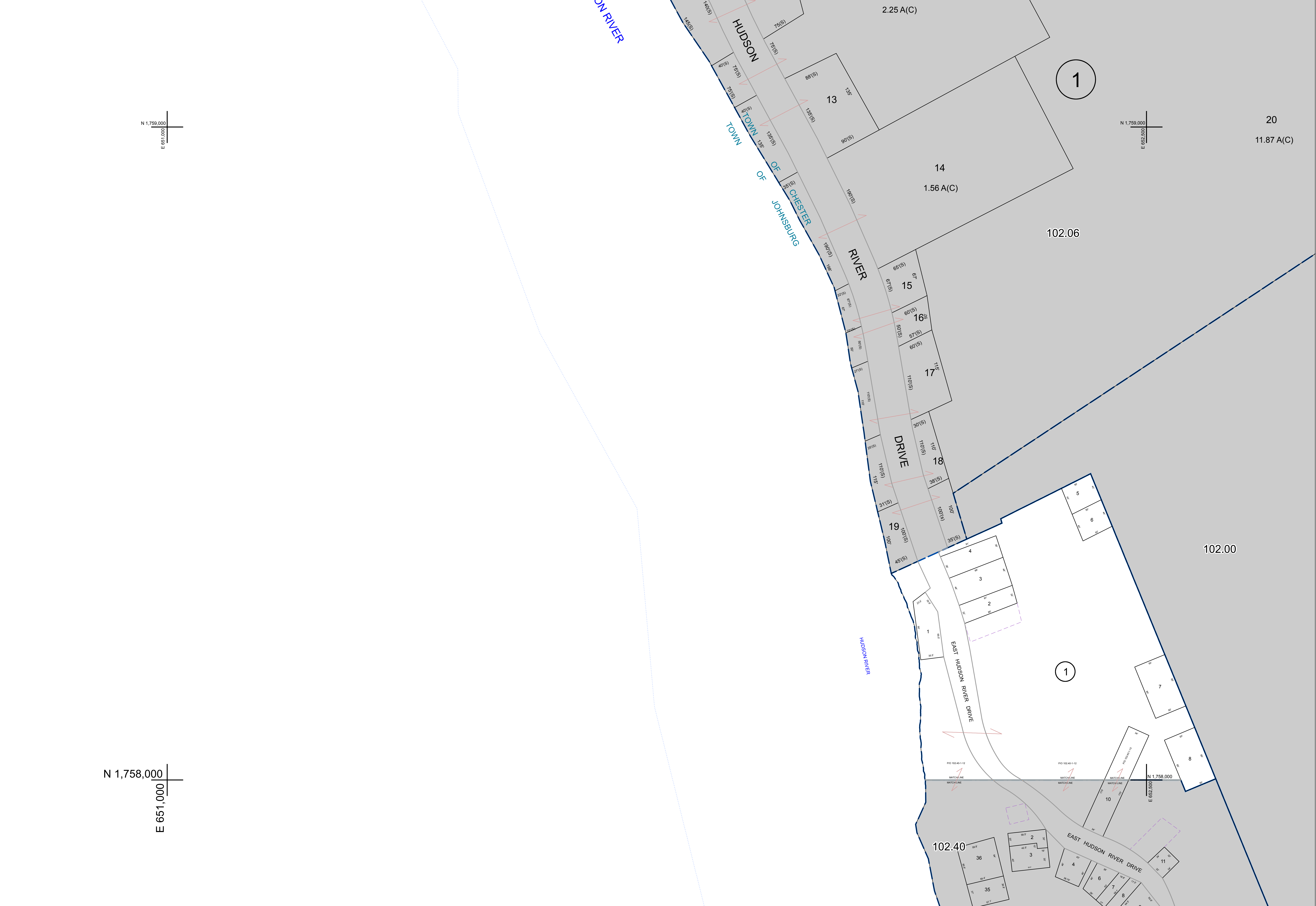


N 1,759,000
E 651,000

N 1,759,000
E 652,500

N 1,758,000
E 651,000



<p>PREPARED BY: WARREN COUNTY REAL PROPERTY SERVICES LAKE GEORGE, NEW YORK</p>	<p>DATE MADE BY CHANGES OR ADDITIONS</p>	<p>REVISION TABLE</p>	<p>SPECIAL DISTRICTS</p>	<p>LEGEND</p> <p>PROPERTY LINE ORIGINAL LOT LINE RAILROAD STREAM OR DITCH ROAD OR RAILWAY BNDY COUNTY LINE</p>	<p>TOWN LINE VILAGE LINE BLOCK LIMIT GREAT LOT LINE SCHOOL DISTRICT LINE</p>	<p>FIRE DISTRICT LINE DENOTES COMMON OWNER TAX MAP BLOCK NUMBER TAX MAP PARCEL NUMBER FILED PLAN LOT NUMBER</p>	<p>GREAT LOT NUMBER CALCULATED ACREAGE DEED ACREAGE SCALED DIMENSION DEED DIMENSION</p>	<p>NORTH COORDINATES BASED ON NEW YORK STATE PLANE COORDINATE SYSTEM EASTERN ZONE NAD 83</p>	<p>TAX MAP TOWN OF CHESTER WARREN COUNTY, NEW YORK</p> <p>scale: 1 inch = 50 feet</p>	<p>102.31</p>
	<p>THIS DOCUMENT PREPARED FOR TAX PURPOSES ONLY</p>									