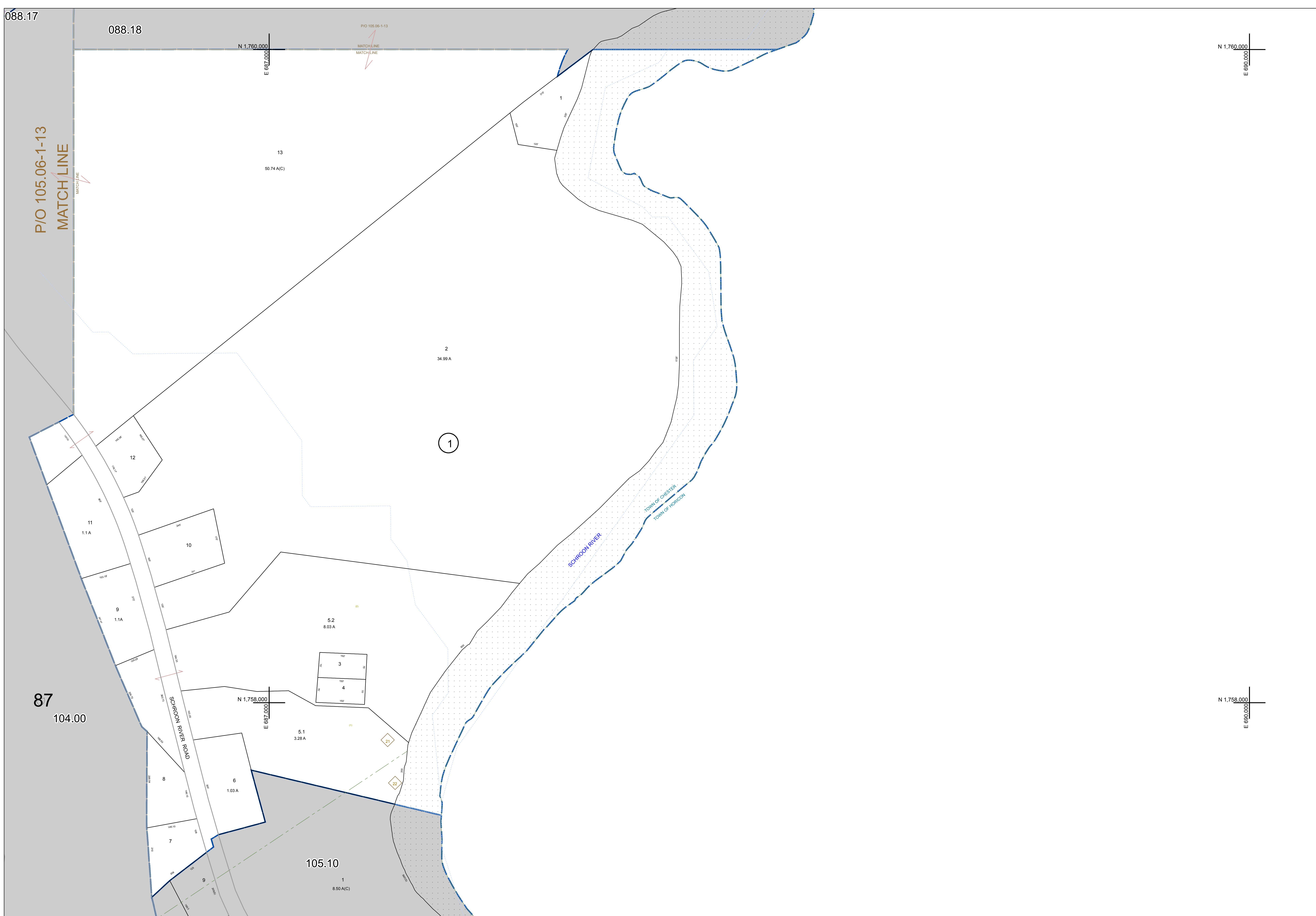


088.17

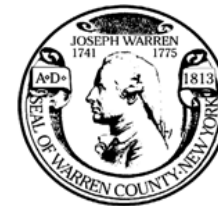
088.18

P/O 105.06-1-13  
MATCH LINE



87  
104.00

105.10  
8.50 A(C)

PREPARED BY:  

**WARREN COUNTY REAL PROPERTY SERVICES**  
 LAKE GEORGE, NEW YORK

REVISION TABLE		
DATE	MADE BY	CHANGES OR ADDITIONS

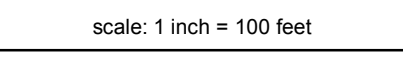
SPECIAL DISTRICTS	

PROPERTY LINE		TOWN LINE		FIRE DISTRICT LINE	
ORIGINAL LOT LINE	--- (dashed)	VILLAGE LINE	--- (dashed)	DENOTES COMMON OWNER	--- (dashed)
RAILROAD	--- (dashed)	BLOCK LIMIT	--- (dashed)	TAX MAP BLOCK NUMBER	7
STREAM OR DITCH	--- (dashed)	GREAT LOT LINE	--- (dashed)	TAX MAP PARCEL NUMBER	76.00-1-11
ROAD OR RAILWAY BNDY	--- (dashed)	SCHOOL DISTRICT LINE	--- (dashed)	FILED PLAN LOT NUMBER	(14)
COUNTY LINE	--- (dashed)				

LEGEND	
GREAT LOT NUMBER	76 (C)
CALCULATED ACREAGE	175 A
DEED ACREAGE	225 (B)
DEED DIMENSION	173.2

NORTH  
  
 COORDINATES BASED ON  
 NEW YORK STATE PLANE COORDINATE SYSTEM  
 EASTERN ZONE NAD 83

SHEET INDEX	
105.10	105.10
105.09	105.11

TAX MAP  
**TOWN OF CHESTER**  
 WARREN COUNTY, NEW YORK  
  
 scale: 1 inch = 100 feet

**105.06**  
 DATE PRINTED: Apr 11, 2011

THIS DOCUMENT PREPARED FOR TAX PURPOSES ONLY