

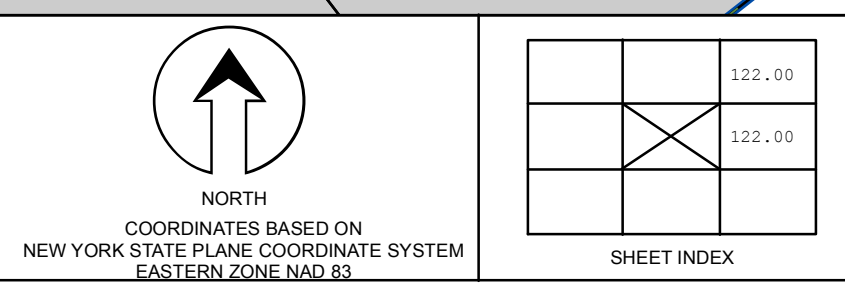
PREPARED BY:  
**WARREN COUNTY REAL PROPERTY SERVICES**  
 LAKE GEORGE, NEW YORK

DATE	MADE BY	CHANGES OR ADDITIONS
11/17/2010	B. DIXON	PARCELS 121.00-1-11 REVISED BY DEED BOOK 4111 PAGE 283
11/19/2010	B. DIXON	PARCELS 121.00-1-12, 1 REVISED BY DEED HERBACH
6/9/2010	B. DIXON	PARCELS 121.00-1-11, 2, 4 A REVISED BY AN UNFILED SURVEY FOR GARANTISDES 121.00-1-21,
2/12/2010	B. DIXON	PARCELS 121.00-1-14 REVISED BY DEED AND FILED MAP HERBACH
2/12/2010	B. DIXON	PARCELS 121.00-1-3 REVISED BY DEED RESEARCH
9/22/2009	B. DIXON	121.00-1-14 REVISED BY DEED RESEARCH AND REVIEW OF A RECENTLY FILED SURVEY FOR PECK PROP.
9/22/2009	B. DIXON	PARCEL 121.00-1-11 REVISED BY A RECENTLY FILED SURVEY FOR PECK PROPERTIES, LLC (121.00-1-31),
9/22/2009	B. DIXON	PARCEL 121.00-1-11 REVISED BY DEED BOOK 3555 PAGE 42

SPECIAL DISTRICTS
PROPERTY LINE
ORIGINAL LOT LINE
RAILROAD
STREAM OR DITCH
ROAD OR RAILWAY BNDY
COUNTY LINE

LEGEND
TOWN LINE
VILLAGE LINE
BLOCK LIMIT
GREAT LOT LINE
SCHOOL DISTRICT LINE
FIRE DISTRICT LINE
DENOTES COMMON OWNER
TAX MAP BLOCK NUMBER
TAX MAP PARCEL NUMBER
FILED PLAN LOT NUMBER
76.00-1-11
(14)

GREAT LOT NUMBER	DEED ACRES	DEED DIMENSION
76 (C)	175 A	226 (S)
175 A	226 (S)	173.2



TAX MAP  
**TOWN OF CHESTER**  
 WARREN COUNTY, NEW YORK  
 SCALE: 1 inch = 400 feet  
 DATE PRINTED: Apr 11, 2011