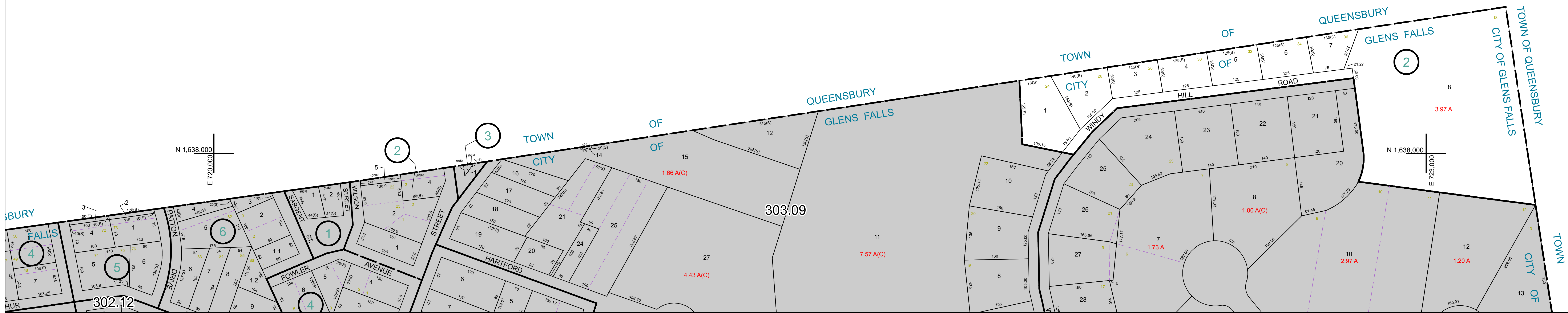


N 1,640,000
E 720,000

N 1,640,000
E 720,000

N 1,638,000
E 720,000

N 1,638,000
E 723,000



WARREN COUNTY REAL PROPERTY SERVICES
LAKE GEORGE, NEW YORK

REVISION TABLE		
DATE	MADE BY	CHANGES OR ADDITIONS

SPECIAL DISTRICTS	

LEGEND	
PROPERTY LINE	---
ORIGINAL LOT LINE	---
RAILROAD	---
STREAM OR DITCH	---
ROAD OR RAILWAY BNDY	---
COUNTY LINE	---
TOWN LINE	---
VILLAGE LINE	---
BLOCK LIMIT	---
GREAT LOT LINE	---
SCHOOL DISTRICT LINE	---
FIRE DISTRICT LINE	---
DENOTES COMMON OWNER	---
TAX MAP BLOCK NUMBER	---
TAX MAP PARCEL NUMBER	---
FILED PLAN LOT NUMBER	---

GREAT LOT NUMBER	
CALCULATED ACREAGE	78 (C)
DEED ACREAGE	78 A
SCALED DIMENSION	228 (B)
DEED DIMENSION	173.2

NORTH
COORDINATES BASED ON
NEW YORK STATE PLANE COORDINATE SYSTEM
EASTERN ZONE NAD 83

SHEET INDEX		
302.12	303.09	303.10

TAX MAP
CITY OF GLENS FALLS
WARREN COUNTY, NEW YORK

303.05
SCALE: 1 inch = 100 feet
DATE PRINTED: Apr 11, 2011

THIS DOCUMENT PREPARED FOR TAX PURPOSES ONLY