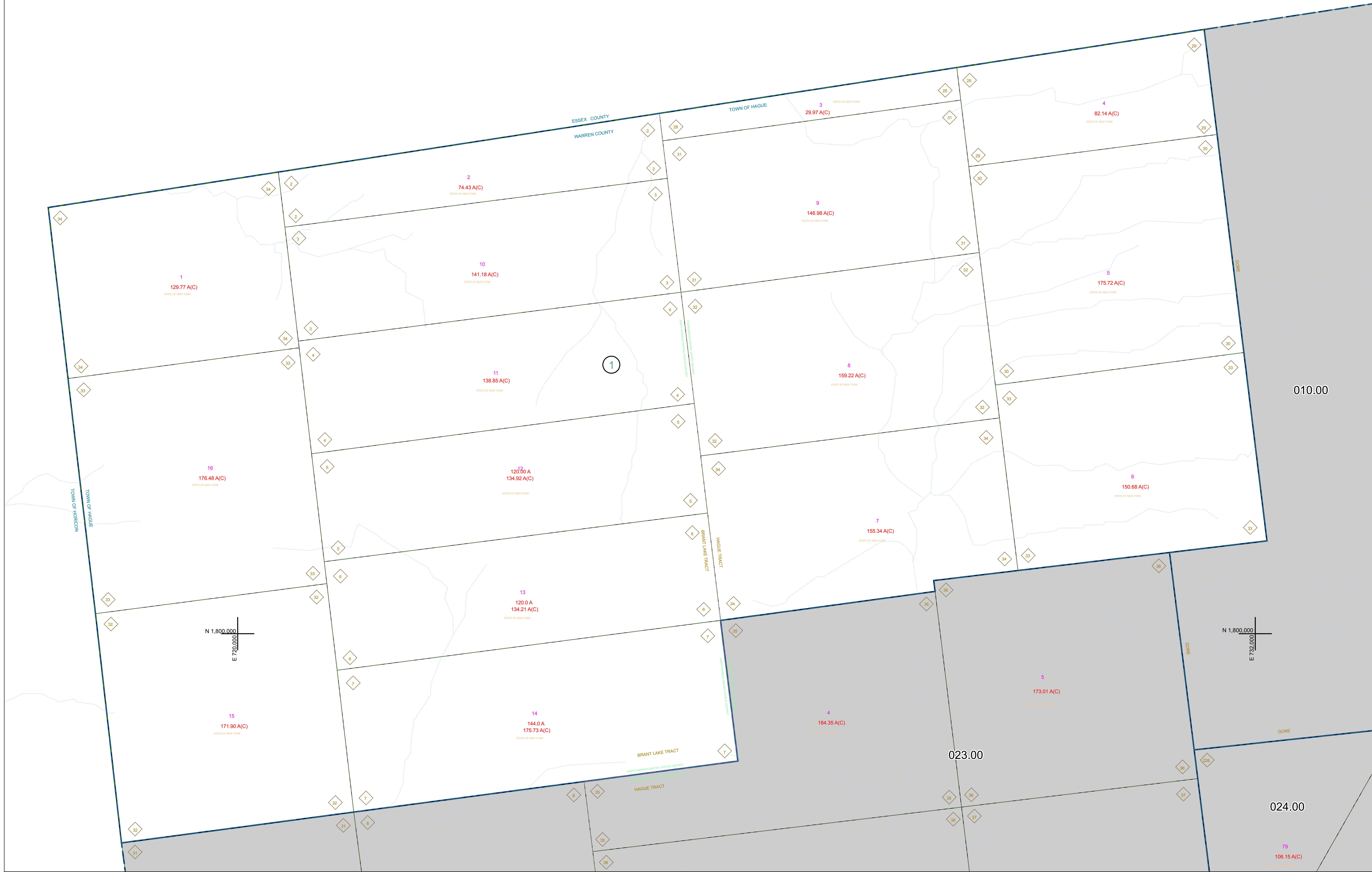



N 1,808,000  
E 720,000

N 1,808,000  
E 732,000



N 1,800,000  
E 720,000

N 1,800,000  
E 732,000


 PREPARED BY:  
**WARREN COUNTY REAL PROPERTY SERVICES**  
 LAKE GEORGE, NEW YORK

REVISION TABLE		
DATE	MADE BY	CHANGES OR ADDITIONS

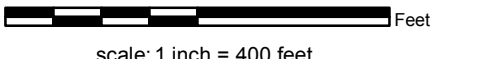
SPECIAL DISTRICTS	

LEGEND	
PROPERTY LINE	—
ORIGINAL LOT LINE	- - - - -
RAILROAD	—+—+—+—
STREAM OR DITCH	~~~~~
ROAD OR RAILWAY BNDY	—+—+—+—
COUNTY LINE	—+—+—+—
TOWN LINE	—+—+—+—
VILLAGE LINE	—+—+—+—
BLOCK LIMIT	—+—+—+—
GREAT LOT LINE	—+—+—+—
SCHOOL DISTRICT LINE	—+—+—+—
FIRE DISTRICT LINE	—+—+—+—
DENOTES COMMON OWNER	—+—+—+—
TAX MAP BLOCK NUMBER	76.00-1-11
TAX MAP PARCEL NUMBER	(14)
FILED PLAN LOT NUMBER	(14)

LEGEND	
GREAT LOT NUMBER	76 (C)
CALCULATED ACREAGE	175 A
DEED ACREAGE	225 (B)
SCALED DIMENSION	173.2
DEED DIMENSION	173.2


 NORTH  
 COORDINATES BASED ON  
 NEW YORK STATE PLANE COORDINATE SYSTEM  
 EASTERN ZONE NAD 83

SHEET INDEX	
023.00	024.00
022.00	025.00

TAX MAP  
**TOWN OF HAGUE**  
 WARREN COUNTY, NEW YORK  
  
 scale: 1 inch = 400 feet

**009.00**  
 DATE PRINTED: Apr 11, 2011

THIS DOCUMENT PREPARED FOR TAX PURPOSES ONLY