

N 1,780,000
E 7,756,000

N 1,780,000
E 7,759,000

9N

059.00

060.00

800'

N 1,778,000
E 7,756,000

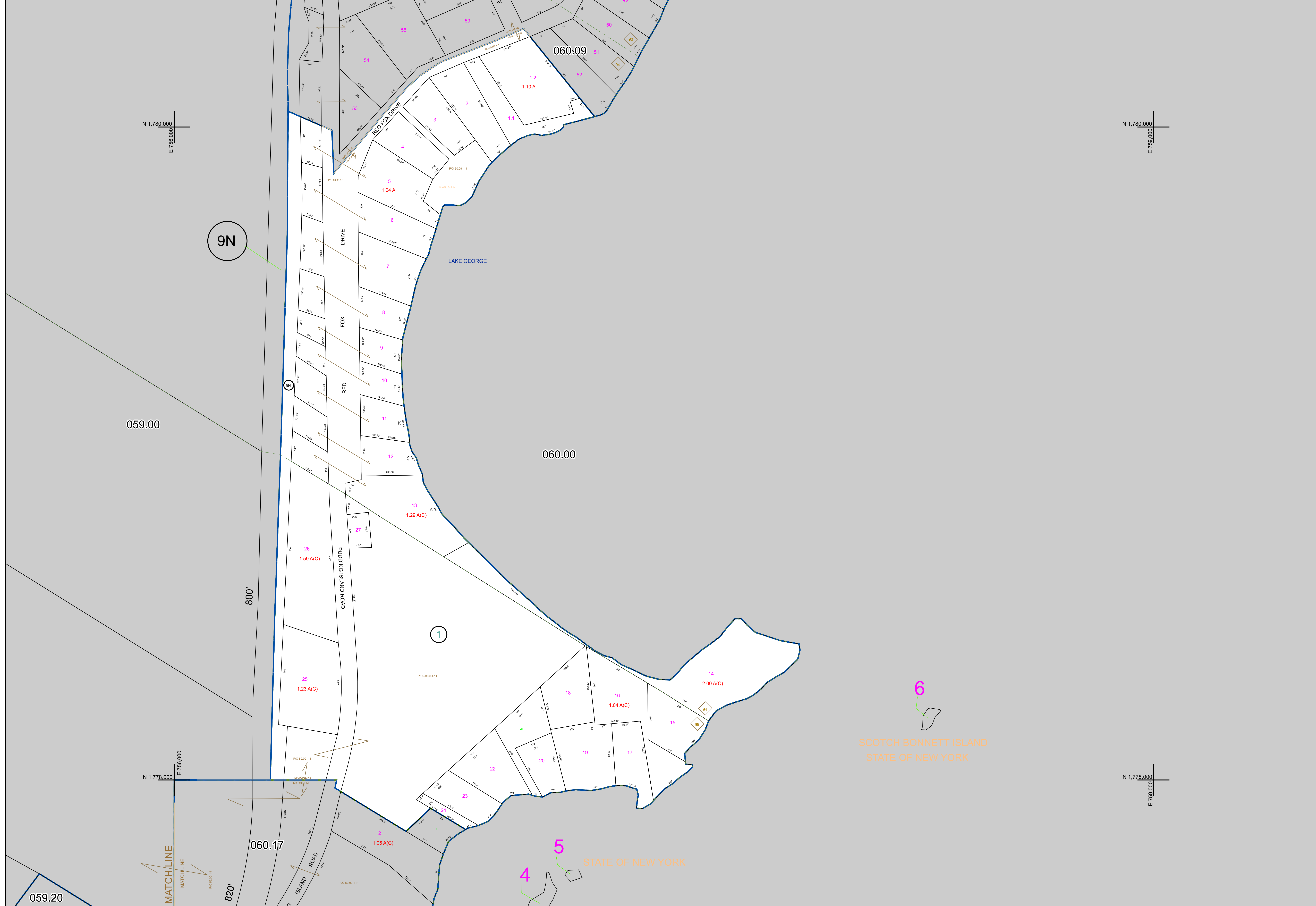
N 1,778,000
E 7,759,000

MATCHLINE

060.17

820'

059.20



6
SCOTCH BONNETT ISLAND
STATE OF NEW YORK

4 5
STATE OF NEW YORK

WARREN COUNTY REAL PROPERTY SERVICES
LAKE GEORGE, NEW YORK

PREPARED BY:
WARREN COUNTY REAL PROPERTY SERVICES
LAKE GEORGE, NEW YORK

REVISION TABLE	
DATE	MADE BY / CHANGES OR ADDITIONS

SPECIAL DISTRICTS	

LEGEND	
PROPERTY LINE	---
ORIGINAL LOT LINE	---
RAILROAD	---
STREAM OR DITCH	---
ROAD OR RAILWAY BNDY	---
COUNTY LINE	---
TOWN LINE	---
VILLAGE LINE	---
BLOCK LIMIT	---
GREAT LOT LINE	---
SCHOOL DISTRICT LINE	---
FIRE DISTRICT LINE	---
DENOTES COMMON OWNER	---
TAX MAP BLOCK NUMBER	---
TAX MAP PARCEL NUMBER	---
FILED PLAN LOT NUMBER	---
GREAT LOT NUMBER	---
CALCULATED ACREAGE	---
DEED ACREAGE	---
DEED DIMENSION	---
DEED DIMENSION	---

COORDINATES BASED ON
NEW YORK STATE PLANE COORDINATE SYSTEM
EASTERN ZONE NAD 83

NORTH

scale: 1 inch = 100 feet

SHEET INDEX		
059.00	060.00	060.00
059.00	060.00	060.00
060.17	060.17	060.00

TAX MAP
TOWN OF HAGUE
WARREN COUNTY, NEW YORK

scale: 1 inch = 100 feet