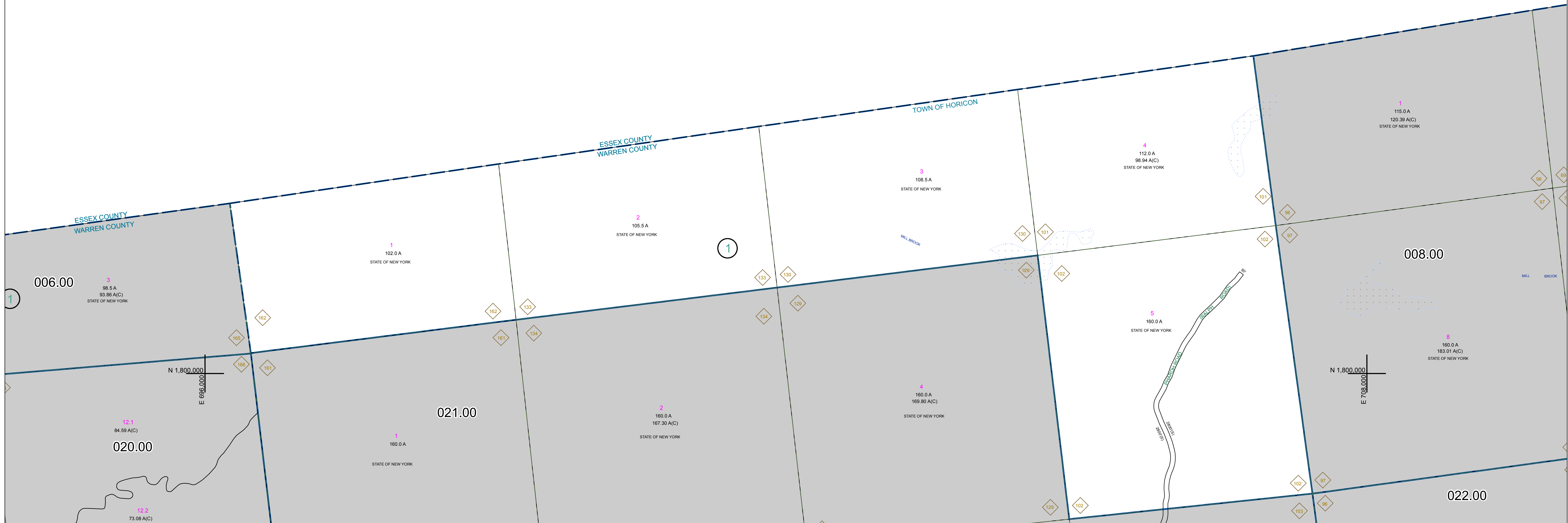


N 1,808,000  
E 698,000

N 1,808,000  
E 708,000



PREPARED BY:  
**WARREN COUNTY REAL PROPERTY SERVICES**  
LAKE GEORGE, NEW YORK

REVISION TABLE			
DATE	MADE BY	CHANGES OR ADDITIONS	

SPECIAL DISTRICTS	

LEGEND	
PROPERTY LINE	—
ORIGINAL LOT LINE	- - - - -
RAILROAD	—+—+—+—
STREAM OR DITCH	~~~~~
ROAD OR RAILWAY BNDY	—+—+—+—
COUNTY LINE	—+—+—+—
TOWN LINE	—+—+—+—
VILLAGE LINE	—+—+—+—
BLOCK LIMIT	—+—+—+—
GREAT LOT LINE	—+—+—+—
SCHOOL DISTRICT LINE	—+—+—+—
FIRE DISTRICT LINE	—+—+—+—
DENOTES COMMON OWNER	
TAX MAP BLOCK NUMBER	7
TAX MAP PARCEL NUMBER	76.00-1-11
FILED PLAN LOT NUMBER	(14)

GREAT LOT NUMBER	76 (C)
CALCULATED ACREAGE	178 A
DEED ACREAGE	228 (B)
SCALED DIMENSION	173.2
DEED DIMENSION	173.2

NORTH  
COORDINATES BASED ON  
NEW YORK STATE PLANE COORDINATE SYSTEM  
EASTERN ZONE NAD 83

SHEET INDEX			
004.00	005.00	006.00	007.00
009.00	010.00	011.00	012.00

TAX MAP  
**TOWN OF HORICON**  
WARREN COUNTY, NEW YORK

scale: 1 inch = 400 feet

**007.00**

DATE PRINTED: Apr 11, 2011

THIS DOCUMENT PREPARED FOR TAX PURPOSES ONLY