

N 1,790,000
E 678,000

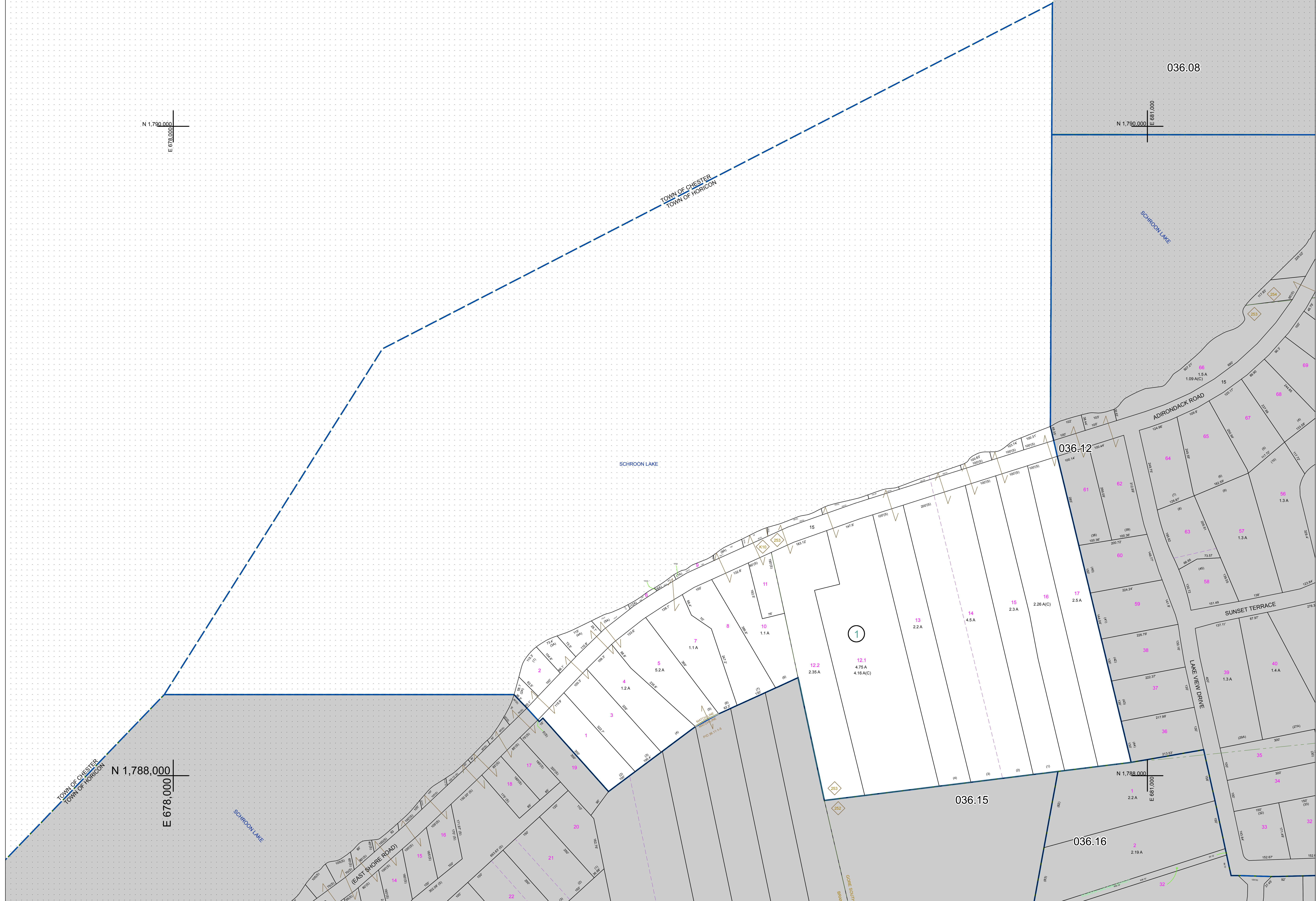
N 1,790,000
E 681,000

N 1,788,000
E 678,000

N 1,788,000
E 681,000

TOWN OF CHESTER
TOWN OF HORICON

TOWN OF CHESTER
TOWN OF HORICON



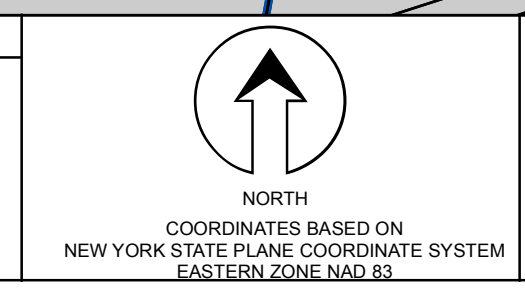
PREPARED BY:
WARREN COUNTY REAL PROPERTY SERVICES
LAKE GEORGE, NEW YORK

REVISION TABLE	
DATE	MADE BY / CHANGES OR ADDITIONS

SPECIAL DISTRICTS	

LEGEND	
PROPERTY LINE	—
ORIGINAL LOT LINE	- - -
RAILROAD	—+—+—+—
STREAM OR DITCH	~~~~~
ROAD OR RAILWAY BNDY	—+—+—+—
COUNTY LINE	—+—+—+—
TOWN LINE	—+—+—+—
VILLAGE LINE	—+—+—+—
BLOCK LIMIT	—+—+—+—
GREAT LOT LINE	—+—+—+—
SCHOOL DISTRICT LINE	—+—+—+—
FIRE DISTRICT LINE	—+—+—+—
DIMOTES COMMON OWNER	—+—+—+—
TAX MAP BLOCK NUMBER	76.00-1-11
TAX MAP PARCEL NUMBER	(14)
FILED PLAN NUMBER	(14)

LEGEND	
GREAT LOT NUMBER	76 (C)
CALCULATED ACREAGE	178 A
DEED ACREAGE	228 (B)
SCALED DIMENSION	173.2
DEED DIMENSION	173.2



SHEET INDEX	
036.08	036.12
036.14	036.16

TAX MAP
TOWN OF HORICON
WARREN COUNTY, NEW YORK
scale: 1 inch = 100 feet

036.11
DATE PRINTED: Apr 11, 2011

THIS DOCUMENT PREPARED FOR TAX PURPOSES ONLY