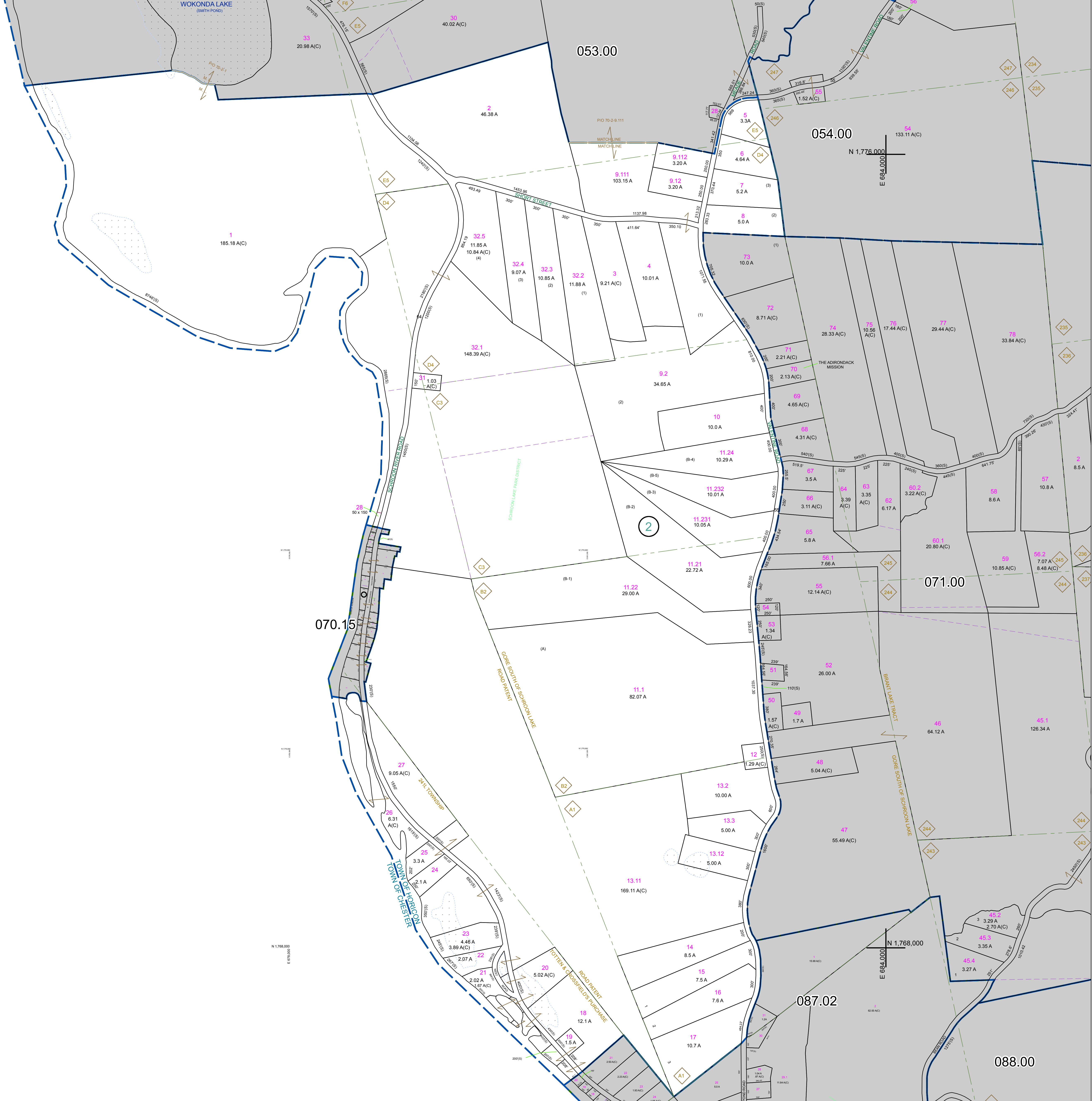


N 1,776,000
E 672,000

N 1,768,000
E 672,000



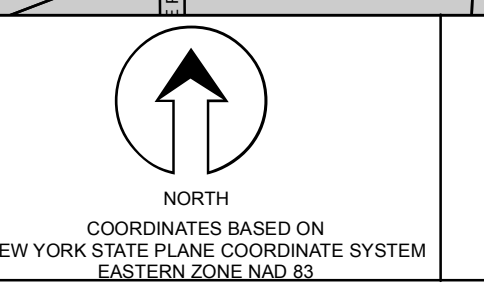
PREPARED BY:
WARREN COUNTY REAL PROPERTY SERVICES
LAKE GEORGE, NEW YORK

REVISION TABLE	
DATE	MADE BY
12/29/2010	R. DIXON
7/24/2010	R. DIXON
7/24/2010	R. DIXON
7/24/2010	R. DIXON
6/29/2008	R. DIXON

SPECIAL DISTRICTS	
PROPERTY LINE	--- (Solid)
ORIGINAL LOT LINE	- - - (Dashed)
RAILROAD	—+—+— (Cross-hatched)
STREAM OR DITCH	~~~~~ (Wavy)
ROAD OR RAILWAY BNDY	—+—+— (Cross-hatched)
COUNTY LINE	—+—+— (Cross-hatched)

LEGEND	
TOWN LINE	--- (Dashed)
VILLAGE LINE	--- (Dashed)
BLOCK LIMIT	--- (Dashed)
GREAT LOT LINE	--- (Dashed)
SCHOOL DISTRICT LINE	--- (Dashed)
FIRE DISTRICT LINE	--- (Dashed)
DENOTES COMMON OWNER	--- (Dashed)
TAX MAP BLOCK NUMBER	--- (Dashed)
TAX MAP PARCEL NUMBER	--- (Dashed)
FILED PLAN LOT NUMBER	--- (Dashed)

LEGEND	
GREAT LOT NUMBER	76.00-1-11
CALCULATED ACREAGE	76 (C)
DEED ACREAGE	76 (C)
SCALED DIMENSION	226 (B)
DEED DIMENSION	173.2



SHEET INDEX	
070.00	071.00
072.00	073.00

TAX MAP
TOWN OF HORICON
WARREN COUNTY, NEW YORK
Scale: 1 inch = 400 feet

070.00
DATE PRINTED: Apr 11, 2011

THIS DOCUMENT PREPARED FOR TAX PURPOSES ONLY