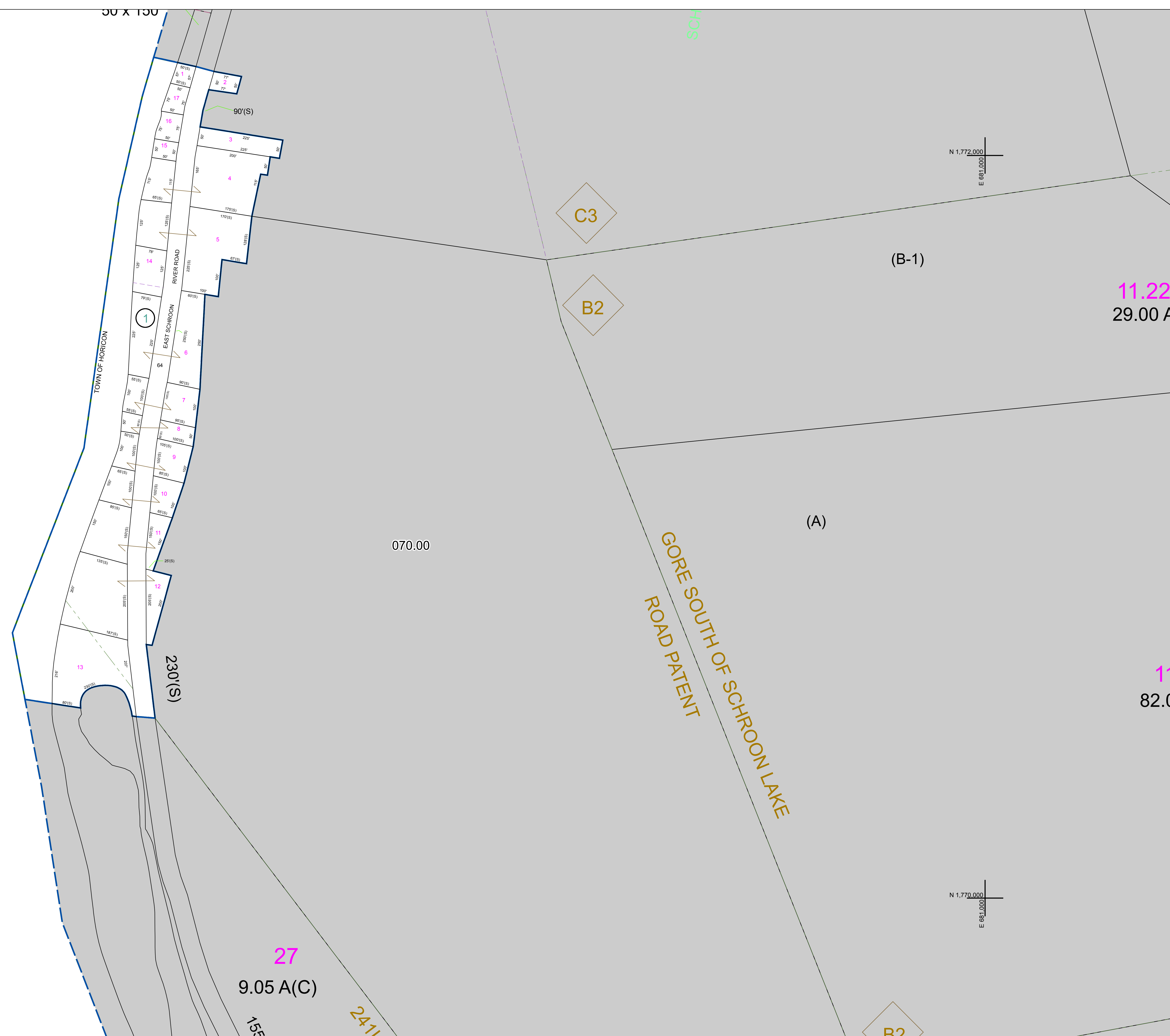


N 1,772,000
E 678,000

N 1,772,000
E 681,000

N 1,770,000
E 678,000

N 1,770,000
E 681,000



REVISION TABLE

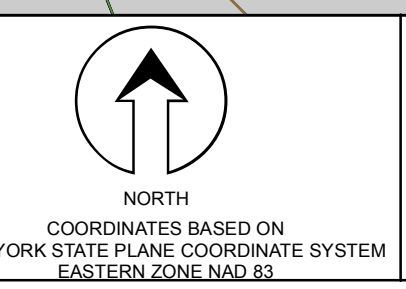
DATE	MADE BY	CHANGES OR ADDITIONS

SPECIAL DISTRICTS

--	--	--

LEGEND

PROPERTY LINE	TOWN LINE	FIRE DISTRICT LINE	GREAT LOT NUMBER
ORIGINAL LOT LINE	VILLAGE LINE	DENOTES COMMON OWNER	CALCULATED ACREAGE
RAILROAD	BLOCK LIMIT	TAX MAP BLOCK NUMBER	DEED ACREAGE
STREAM OR DITCH	GREAT LOT LINE	TAX MAP PARCEL NUMBER	SCALED DIMENSION
ROAD OR RAILWAY BNDY	SCHOOL DISTRICT LINE	FILED PLAN LOT NUMBER	DEED DIMENSION
COUNTY LINE			



070.00	070.00	070.00
070.00	070.00	070.00
070.00	070.00	070.00

SHEET INDEX

TAX MAP
TOWN OF HORICON
WARREN COUNTY, NEW YORK

scale: 1 inch = 100 feet

070.15

DATE PRINTED: Apr 11, 2011



PREPARED BY:
WARREN COUNTY REAL PROPERTY SERVICES
LAKE GEORGE, NEW YORK