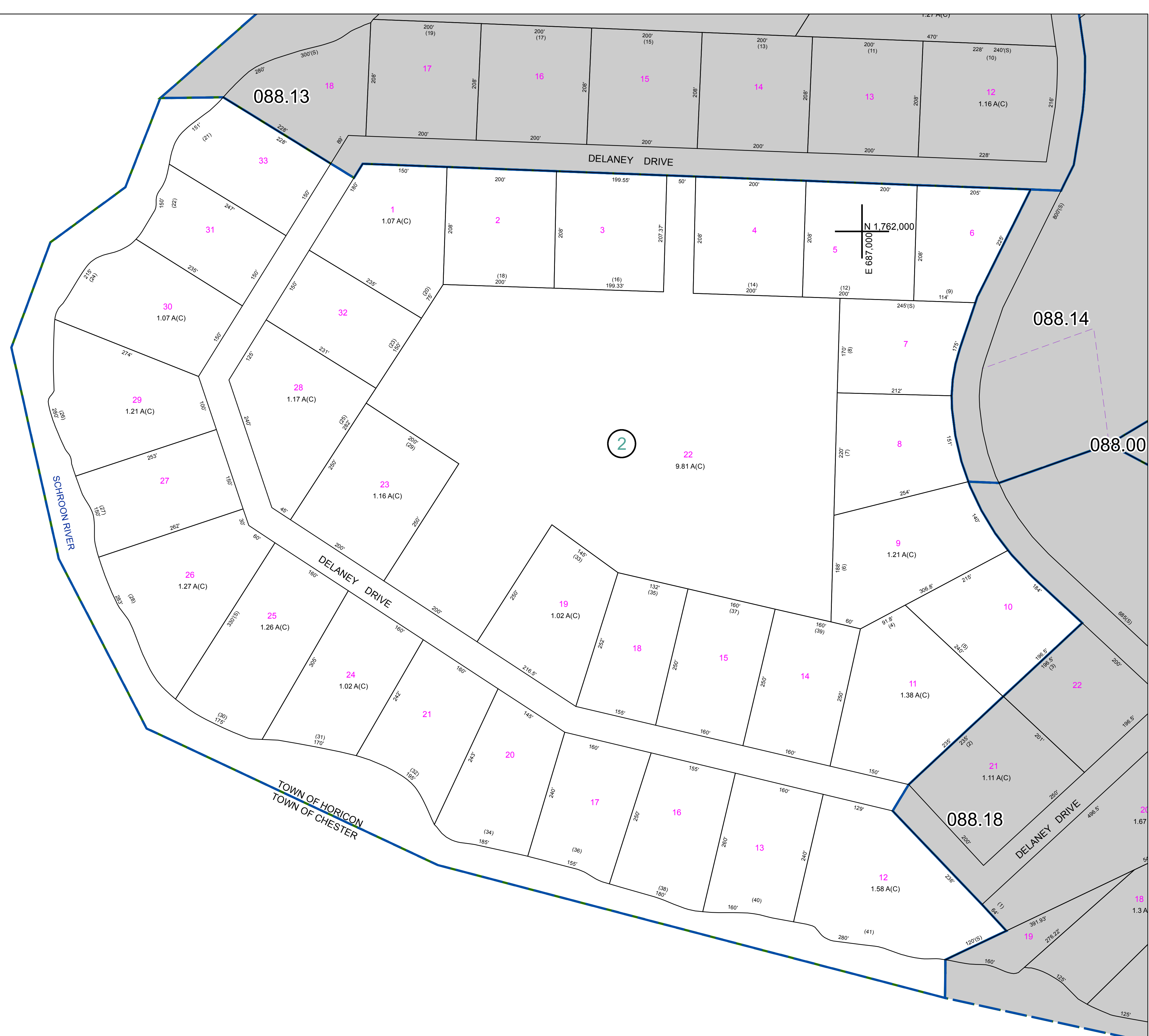


N 1,762,000
E 684,000



N 1,760,000
E 684,000

N 1,760,000
E 687,000



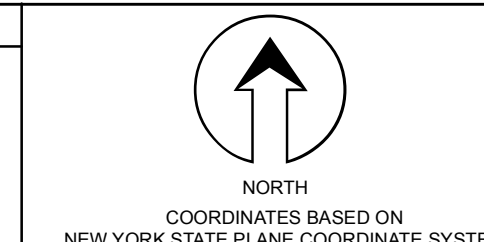
PREPARED BY:
WARREN COUNTY REAL PROPERTY SERVICES
LAKE GEORGE, NEW YORK

REVISION TABLE		
DATE	MADE BY	CHANGES OR ADDITIONS

SPECIAL DISTRICTS	

LEGEND	
PROPERTY LINE	SOLID LINE
ORIGINAL LOT LINE	DASHED LINE
RAILROAD	LINE WITH CROSS-TICKS
STREAM OR DITCH	WAVE LINE
ROAD OR RAILWAY ENDY	DASHED LINE WITH Ticks
COUNTY LINE	DASHED LINE WITH Ticks
TOWN LINE	SOLID LINE
VILLAGE LINE	DASHED LINE
BLOCK LIMIT	DASHED LINE WITH Ticks
GREAT LOT LINE	DASHED LINE WITH Ticks
SCHOOL DISTRICT LINE	DASHED LINE WITH Ticks
FIRE DISTRICT LINE	DASHED LINE WITH Ticks
DENOTES COMMON OWNER	DASHED LINE WITH Ticks
TAX MAP BLOCK NUMBER	7
TAX MAP PARCEL NUMBER	76.00-1-11
FILED PLAN LOT NUMBER	(14)

GREAT LOT NUMBER	76 (C)
CALCULATED ACREAGE	178 A
DEED ACREAGE	228 (B)
DEED DIMENSION	173.2



SHEET INDEX	
088.13	088.14
088.16	088.18
088.20	088.01

TAX MAP
TOWN OF HORICON
WARREN COUNTY, NEW YORK
scale: 1 inch = 100 feet

088.17
DATE PRINTED: Apr 11, 2011