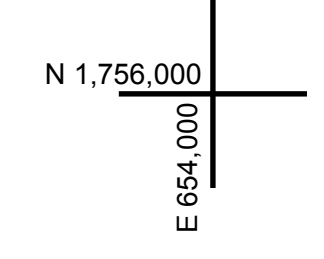
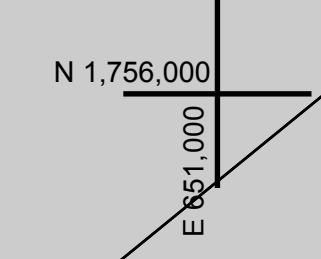
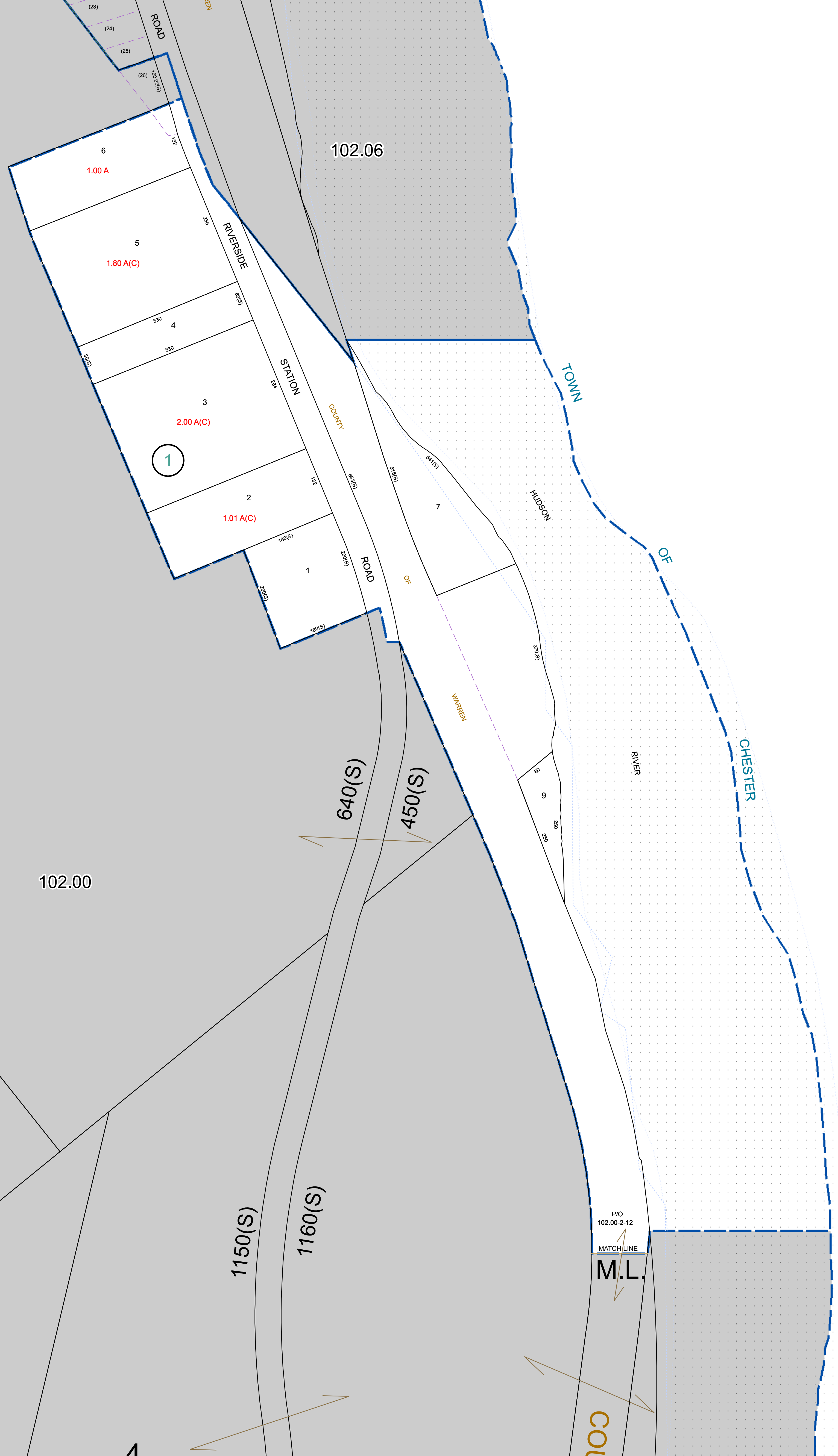
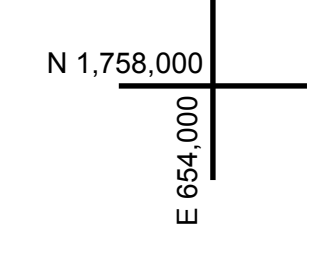
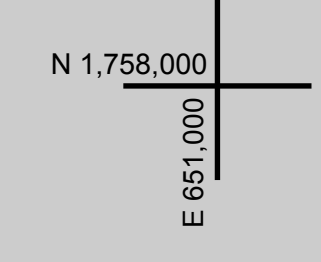



5  
36 A



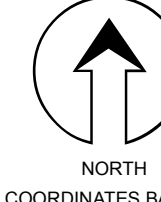

**WARREN COUNTY REAL PROPERTY SERVICES**  
 LAKE GEORGE, NEW YORK  
 PREPARED BY:

REVISION TABLE		
DATE	MADE BY	CHANGES OR ADDITIONS

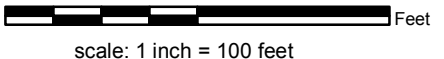
SPECIAL DISTRICTS	

PROPERTY LINE	
ORIGINAL LOT LINE	---
RAILROAD	—+—+—+—
STREAM OR DITCH	~~~~~
ROAD OR RAILWAY BNDY	—+—+—+—
COUNTY LINE	---

LEGEND	
TOWN LINE	---
VILLAGE LINE	---
BLOCK LIMIT	---
GREAT LOT LINE	---
SCHOOL DISTRICT LINE	---
FIRE DISTRICT LINE	---
DNOTES COMMON OWNER	---
TAX MAP BLOCK NUMBER	7
TAX MAP PARCEL NUMBER	76.00-1-11
FILED PLAN LOT NUMBER	(14)

  
 NORTH  
 COORDINATES BASED ON  
 NEW YORK STATE PLANE COORDINATE SYSTEM  
 EASTERN ZONE NAD 83

SHEET INDEX		
102.00	102.08	102.00
102.00	102.00	102.00
102.00	102.00	102.00

**TAX MAP**  
**TOWN OF JOHNSBURG**  
 WARREN COUNTY, NEW YORK  
  
 SCALE: 1 inch = 100 feet

THIS DOCUMENT PREPARED FOR TAX PURPOSES ONLY