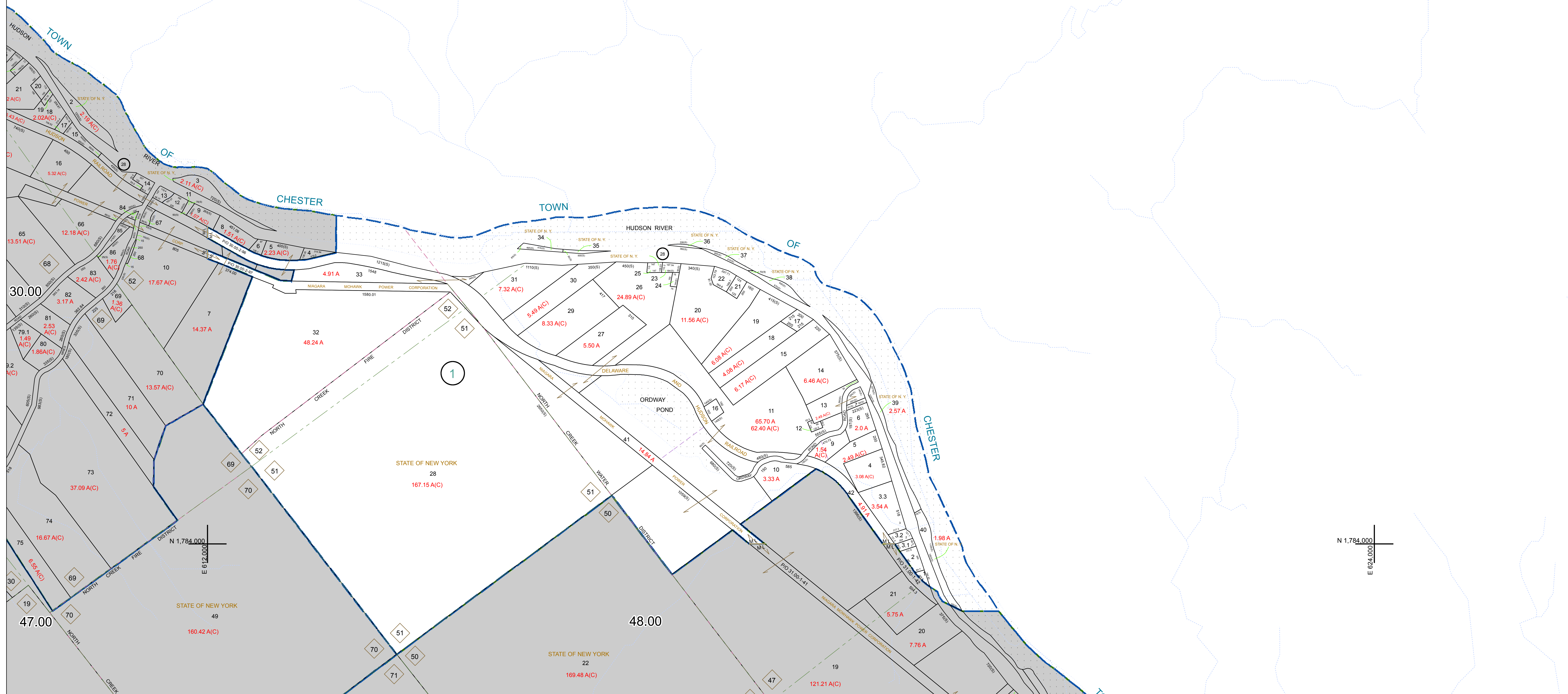


N 1,792,000
E 612,000

N 1,792,000
E 624,000



N 1,784,000
E 612,000

N 1,784,000
E 624,000

PREPARED BY:
WARREN COUNTY REAL PROPERTY SERVICES
LAKE GEORGE, NEW YORK

REVISION TABLE			
DATE	MADE BY	CHANGES OR ADDITIONS	

SPECIAL DISTRICTS	

LEGEND	
PROPERTY LINE	—
ORIGINAL LOT LINE	- - -
RAILROAD	—+—+—+—
STREAM OR DITCH	~~~~~
ROAD OR RAILWAY BNDY	—+—+—+—
COUNTY LINE	—+—+—+—
TOWN LINE	—+—+—+—
VILLAGE LINE	—+—+—+—
BLOCK LIMIT	—+—+—+—
GREAT LOT LINE	—+—+—+—
SCHOOL DISTRICT LINE	—+—+—+—
FIRE DISTRICT LINE	—+—+—+—
DENOTES COMMON OWNER	—+—+—+—
TAX MAP BLOCK NUMBER	76.00-1-11
TAX MAP PARCEL NUMBER	(14)
FILED PLAN LOT NUMBER	(14)

LEGEND	
GREAT LOT NUMBER	76 (C)
CALCULATED ACREAGE	176 A
DEED ACREAGE	226 (B)
SCALED DIMENSION	173.2
DEED DIMENSION	173.2

SHEET INDEX	
30.00	31.00
47.00	48.00

TAX MAP
TOWN OF JOHNSBURG
WARREN COUNTY, NEW YORK

31.00
DATE PRINTED: Apr 11, 2011