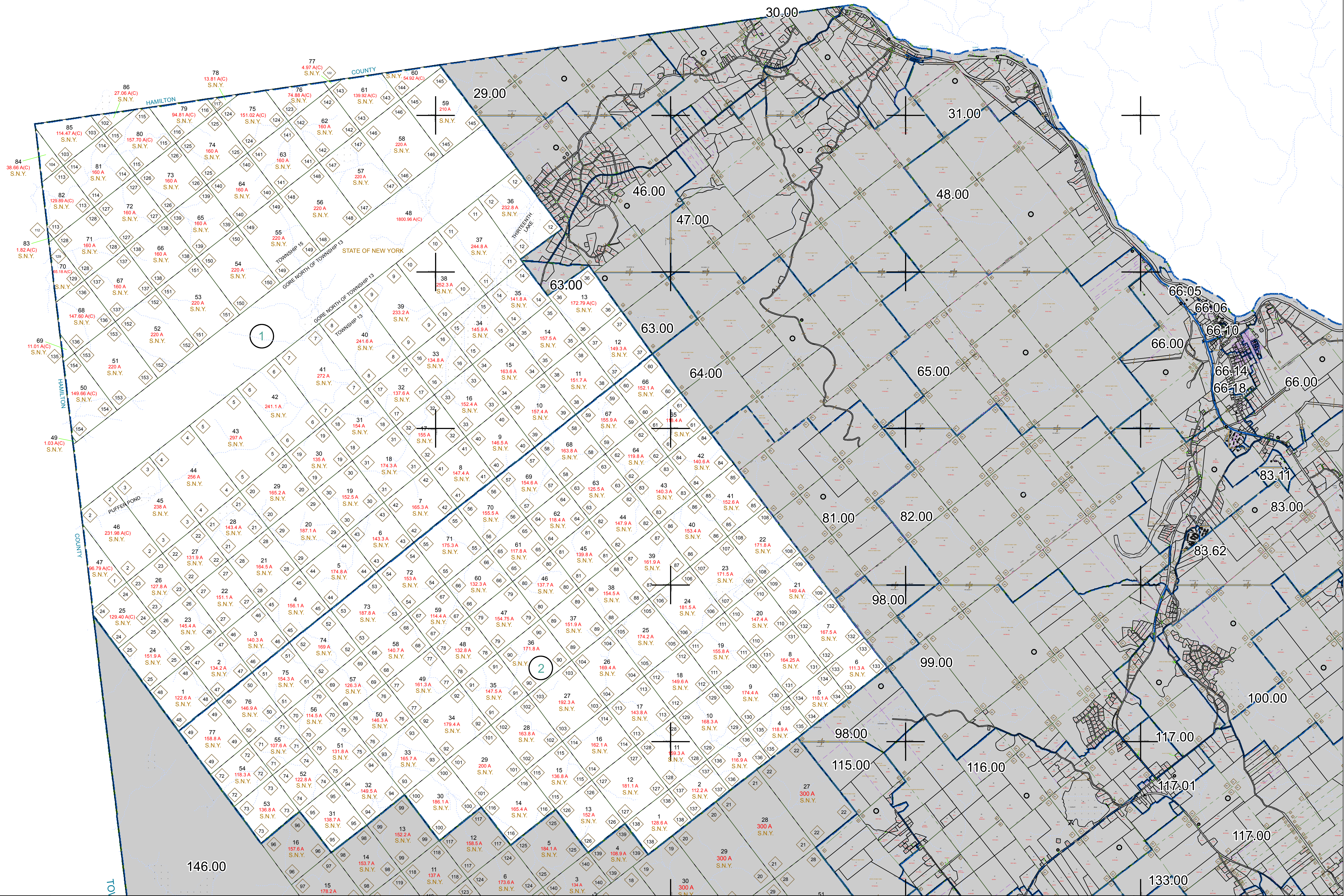


N 1,792,000
E 584,000



N 1,752,000
E 584,000



PREPARED BY:
WARREN COUNTY REAL PROPERTY SERVICES
LAKE GEORGE, NEW YORK

REVISION TABLE			
DATE	MADE BY	CHANGES OR ADDITIONS	

SPECIAL DISTRICTS	
PROPERTY LINE	---
ORIGINAL LOT LINE	---
RAILROAD	---
STREAM OR DITCH	---
ROAD OR RAILWAY BENDY	---
COUNTY LINE	---

TOWN LINE	
VILLAGE LINE	---
BLOCK LIMIT	---
GREAT LOT LINE	---
SCHOOL DISTRICT LINE	---

LEGEND	
FIRE DISTRICT LINE	---
DNOTES COMMON OWNER	---
TAX MAP BLOCK NUMBER	---
TAX MAP PARCEL NUMBER	---
FILED PLAN LOT NUMBER	---

GREAT LOT NUMBER
CALCULATED ACREAGE
DEED ACREAGE
SCALED DIMENSION
DEED DIMENSION

TAX MAP	
146.00	62.00

TOWN OF JOHNSBURG
WARREN COUNTY, NEW YORK
SCALE: 1 inch = 2,000 feet
DATE PRINTED: Apr 11, 2011

THIS DOCUMENT PREPARED FOR TAX PURPOSES ONLY