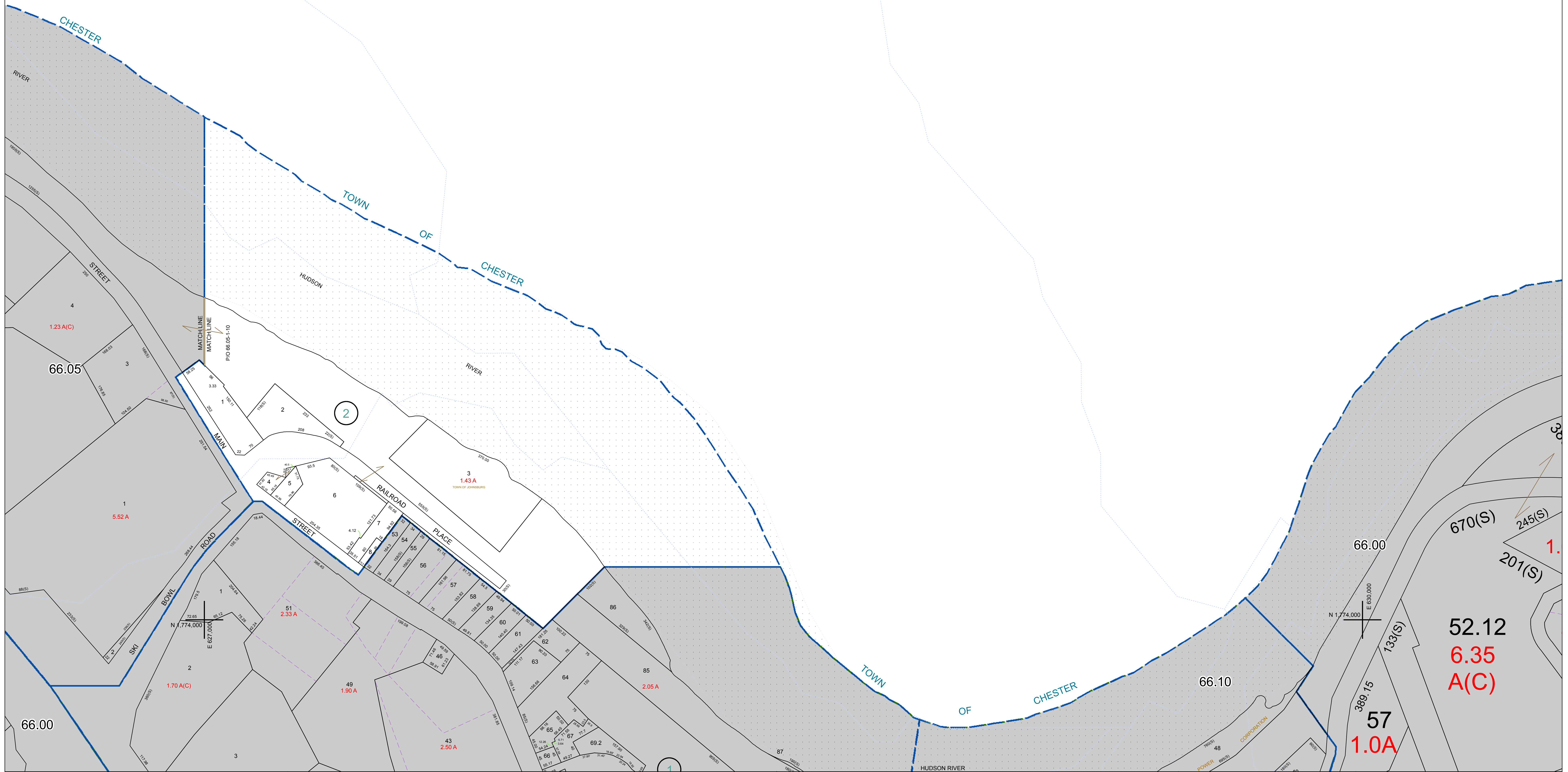


N 1,776,000
E 827,000

N 1,776,000
E 630,000



PREPARED BY:
WARREN COUNTY REAL PROPERTY SERVICES
LAKE GEORGE, NEW YORK

DATE	MADE BY	CHANGES OR ADDITIONS
3/15/2011	S. DIXON	CANCEL 40-04-01 REVISED BY DEED BOOK 4191 PAGE 14

SPECIAL DISTRICTS	
PROPERTY LINE	---
ORIGINAL LOT LINE	---
RAILROAD	---
STREAM OR DITCH	---
ROAD OR RAILWAY BNDY	---
COUNTY LINE	---

LEGEND	
TOWN LINE	---
VILLAGE LINE	---
BLOCK LIMIT	---
GREAT LOT LINE	---
SCHOOL DISTRICT LINE	---
FIRE DISTRICT LINE	---
DENOTES COMMON OWNER	---
TAX MAP BLOCK NUMBER	---
TAX MAP PARCEL NUMBER	---
FILED PLAN LOT NUMBER	---

GREAT LOT NUMBER	---
CALCULATED ACREAGE	78 (C)
DEED ACREAGE	178 A
SCALED DIMENSION	228 (B)
DEED DIMENSION	173.2

NORTH
COORDINATES BASED ON
NEW YORK STATE PLANE COORDINATE SYSTEM
EASTERN ZONE NAD 83

SHEET INDEX			
64.05	64.00	66.00	66.05
64.00	64.00	66.00	66.00

TAX MAP
TOWN OF JOHNSBURG
WARREN COUNTY, NEW YORK

SCALE: 1 inch = 100 feet

DATE PRINTED: Apr 11, 2011