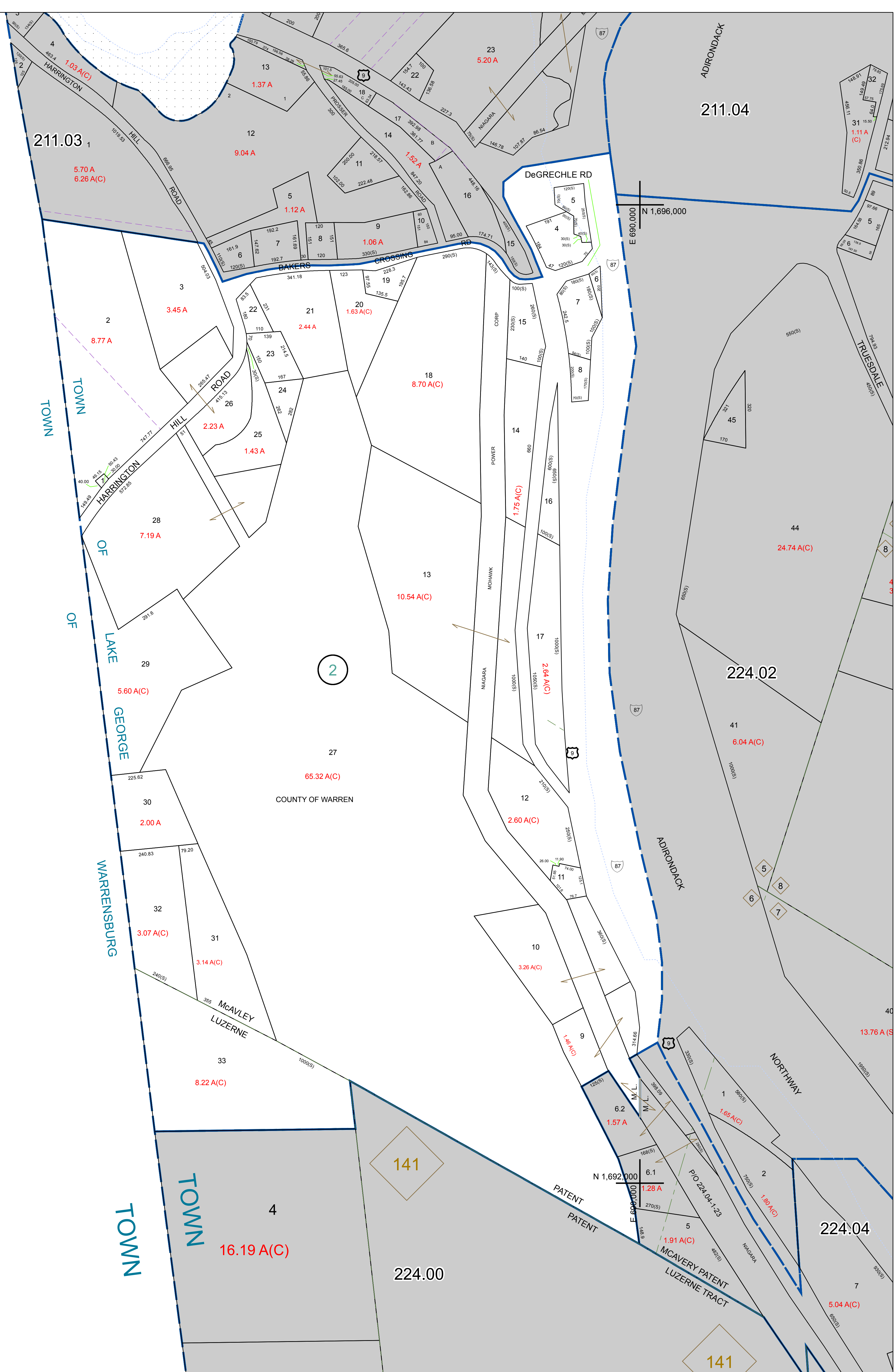


N 1,696,000
E 684,000

N 1,692,000
E 684,000



PREPARED BY:
WARREN COUNTY REAL PROPERTY SERVICES
LAKE GEORGE, NEW YORK

REVISION TABLE		
DATE	MADE BY	CHANGES OR ADDITIONS
7/8/2020	P. DIXON	PARCELS 224.01-224.03 REVISED BY DEED 2476 PAGE 300
7/8/2020	P. DIXON	PARCELS 224.01-224.03 AND 224.01-224.03 REVISED BY DEED RESEARCH.

SPECIAL DISTRICTS	
PROPERTY LINE	---
ORIGINAL LOT LINE	---
RAILROAD	---
STREAM OR DITCH	---
ROAD OR RAILWAY BNDY	---
COUNTY LINE	---

LEGEND	
TOWN LINE	---
VILLAGE LINE	---
BLOCK LIMIT	---
GREAT LOT LINE	---
SCHOOL DISTRICT LINE	---
FIRE DISTRICT LINE	---
DNOTES COMMON OWNER	---
TAX MAP BLOCK NUMBER	---
TAX MAP PARCEL NUMBER	---
FILED PLAN LOT NUMBER	---
GREAT LOT NUMBER	---
CALCULATED ACREAGE	---
DEED ACREAGE	---
SCALED DIMENSION	---
DEED DIMENSION	---

NORTH
COORDINATES BASED ON
NEW YORK STATE PLANE COORDINATE SYSTEM
EASTERN ZONE NAD 83

SHEET INDEX	
224.01	224.02
224.03	224.04

TAX MAP
TOWN OF LAKE GEORGE
WARREN COUNTY, NEW YORK
SCALE: 1 inch = 200 feet
DATE PRINTED: Apr 11, 2011

THIS DOCUMENT PREPARED FOR TAX PURPOSES ONLY