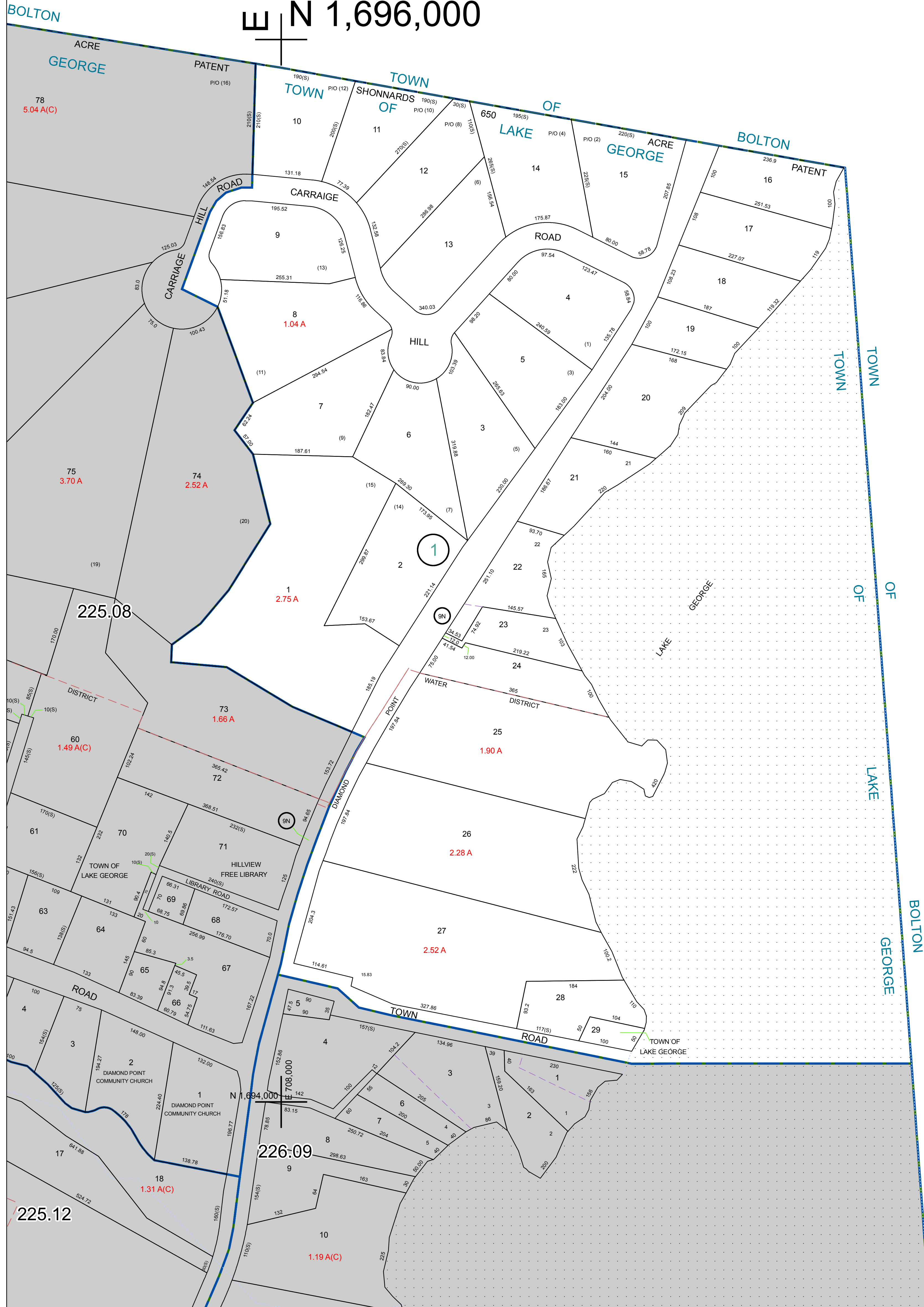


E 708,000  
N 1,696,000

N 1,696,000  
E 711,000

N 1,694,000  
E 711,000



WARREN COUNTY REAL PROPERTY SERVICES  
LAKE GEORGE, NEW YORK

PREPARED BY:

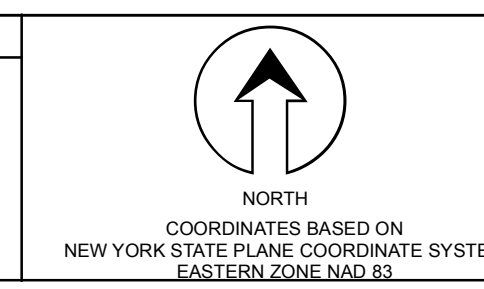
REVISION TABLE	
DATE	MADE BY / CHANGES OR ADDITIONS
3/17/2011	R. DIXON
3/14/2009	R. DIXON

TAX MAP 226.05-1-11 REVISED TO CONFORM WITH FILED MAP OF RECORD (DIAMOND POINT ESTATED), PARCEL 226.05-1-11 REVISED TO CONFORM WITH THE CURRENT DEED OF RECORD (BOOK 3030 PAGE 233).

SPECIAL DISTRICTS
PROPERTY LINE
ORIGINAL LOT LINE
RAILROAD
STREAM OR DITCH
ROAD OR RAILWAY BNDY
COUNTY LINE

LEGEND	
TOWN LINE	VILLAGE LINE
BLOCK LIMIT	GREAT LOT LINE
SCHOOL DISTRICT LINE	FIRE DISTRICT LINE
	DENOTES COMMON OWNER
	TAX MAP BLOCK NUMBER
	TAX MAP PARCEL NUMBER
	FILED PLAN LOT NUMBER

GREAT LOT NUMBER	78 (C)
CALCULATED ACREAGE	178 A
DEED ACREAGE	226 (B)
SCALED DIMENSION	173.2
DEED DIMENSION	



SHEET INDEX	
226.05	226.06
226.07	226.08
226.09	226.10

TAX MAP  
**TOWN OF LAKE GEORGE**  
WARREN COUNTY, NEW YORK

SCALE: 1 inch = 100 feet

THIS DOCUMENT PREPARED FOR TAX PURPOSES ONLY