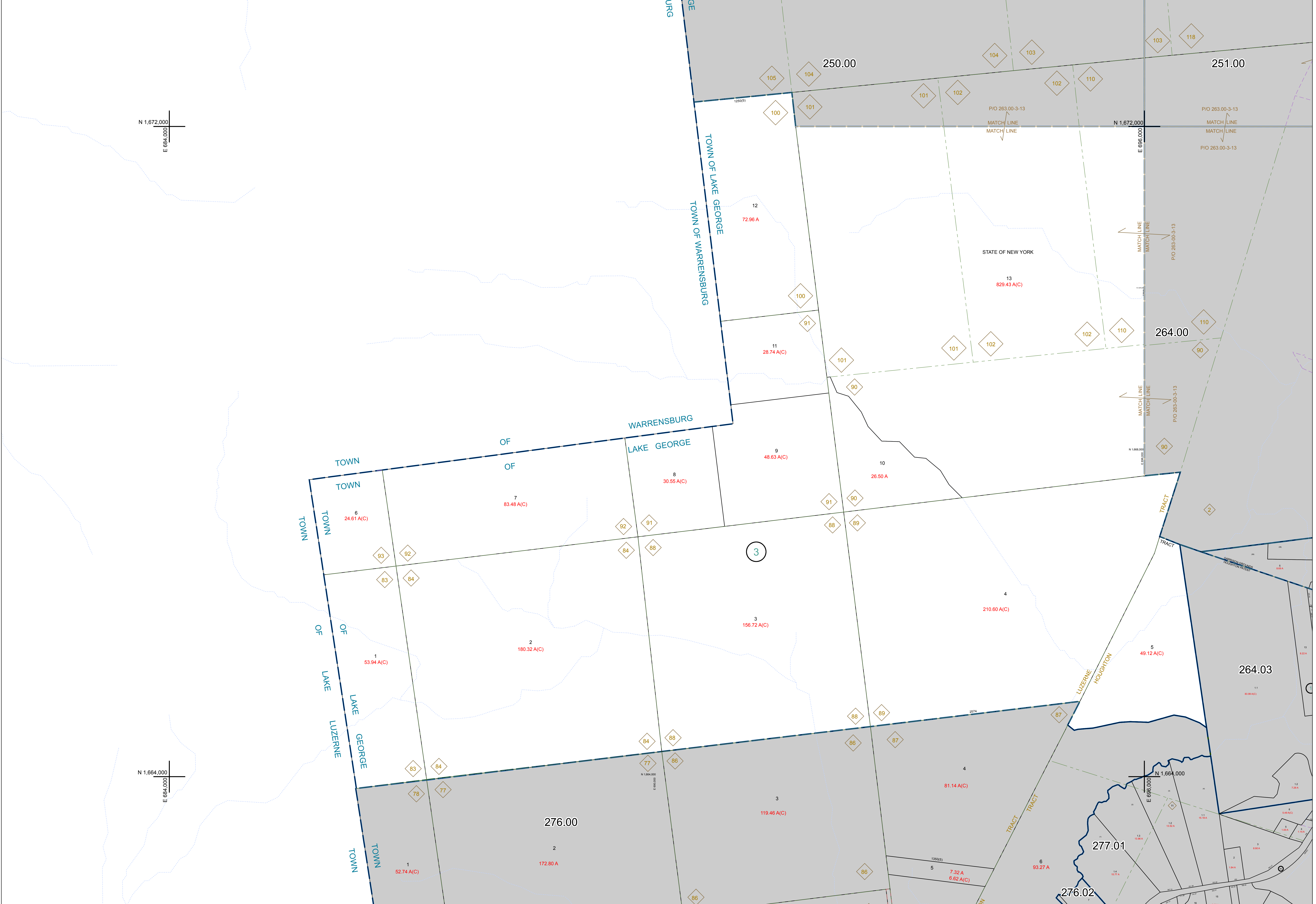
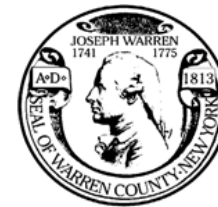


N 1,672,000
E 684,000

N 1,664,000
E 684,000





WARREN COUNTY REAL PROPERTY SERVICES
 LAKE GEORGE, NEW YORK

REVISION TABLE	
DATE	MADE BY / CHANGES OR ADDITIONS
3/12/2010	R. DIXON PARCEL 243-00-3-13 REVISED BY A RECENTLY FILED SUBDIVISION MAP FOR E186 (264.03-1-76)
11/7/2008	R. DIXON PARCEL 243-00-3-5 REVISED BY DEED RESEARCH.

SPECIAL DISTRICTS	
PROPERTY LINE	---
ORIGINAL LOT LINE	---
RAILROAD	---
STREAM OR DITCH	---
ROAD OR RAILWAY ENDY	---
COUNTY LINE	---

LEGEND	
TOWN LINE	---
VILLAGE LINE	---
BLOCK LIMIT	---
GREAT LOT LINE	---
SCHOOL DISTRICT LINE	---
FIRE DISTRICT LINE	---
DENOTES COMMON OWNER	---
TAX MAP BLOCK NUMBER	---
TAX MAP PARCEL NUMBER	---
FILED PLAN LOT NUMBER	---

GREAT LOT NUMBER	78 (C)
CALCULATED ACREAGE	176 A
DEED ACREAGE	226 (B)
DEED DIMENSION	173.2


 NORTH
 COORDINATES BASED ON
 NEW YORK STATE PLANE COORDINATE SYSTEM
 EASTERN ZONE NAD 83

SHEET INDEX	
250.00	251.00
276.00	264.00
276.00	276.00

TAX MAP
TOWN OF LAKE GEORGE
 WARREN COUNTY, NEW YORK
 SCALE: 1 inch = 400 feet
 DATE PRINTED: Apr 11, 2011