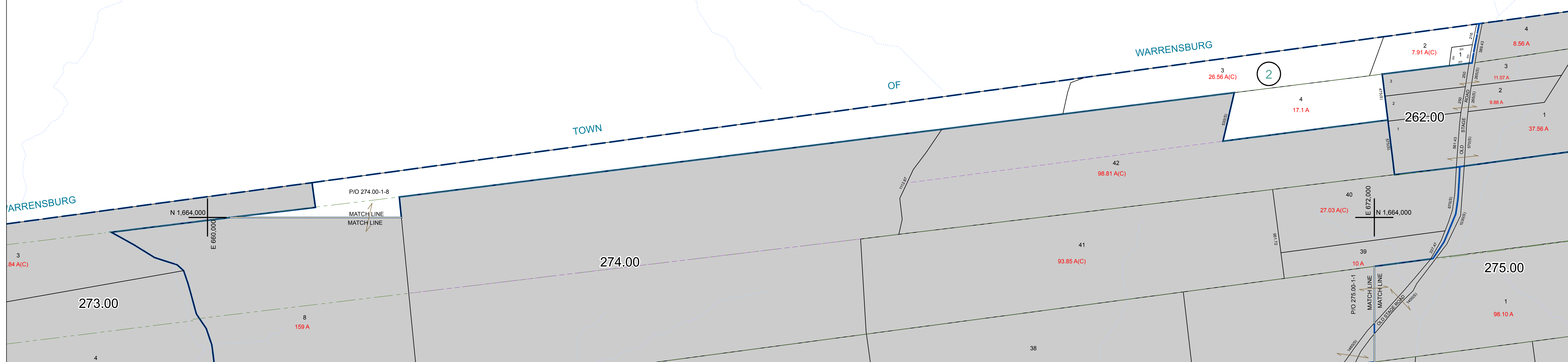


N 1,672,000
E 660,000

N 1,672,000
E 672,000



PREPARED BY:
WARREN COUNTY REAL PROPERTY SERVICES
LAKE GEORGE, NEW YORK

REVISION TABLE		
DATE	MADE BY	CHANGES OR ADDITIONS

SPECIAL DISTRICTS	

PROPERTY LINE	
ORIGINAL LOT LINE	---
RAILROAD	—+—+—+—
STREAM OR DITCH	~~~~~
ROAD OR RAILWAY BNDY	—+—+—+—
COUNTY LINE	---

TOWN LINE	
VILLAGE LINE	---
BLOCK LIMIT	---
GREAT LOT LINE	---
SCHOOL DISTRICT LINE	---

LEGEND	
FIRE DISTRICT LINE	---
DENOTES COMMON OWNER	---
TAX MAP BLOCK NUMBER	7
TAX MAP PARCEL NUMBER	76.00-1-11
FILED PLAN LOT NUMBER	(14)

GREAT LOT NUMBER	
CALCULATED ACREAGE	76 (C)
DEED ACREAGE	776 A
SCALED DIMENSION	226 (B)
DEED DIMENSION	173.2

NORTH
COORDINATES BASED ON
NEW YORK STATE PLANE COORDINATE SYSTEM
EASTERN ZONE NAD 83

SHEET INDEX			
273.00	274.00	275.00	276.00

TAX MAP
TOWN OF LAKE LUZERNE
WARREN COUNTY, NEW YORK
261.00
SCALE: 1 inch = 400 feet
DATE PRINTED: Apr 11, 2011