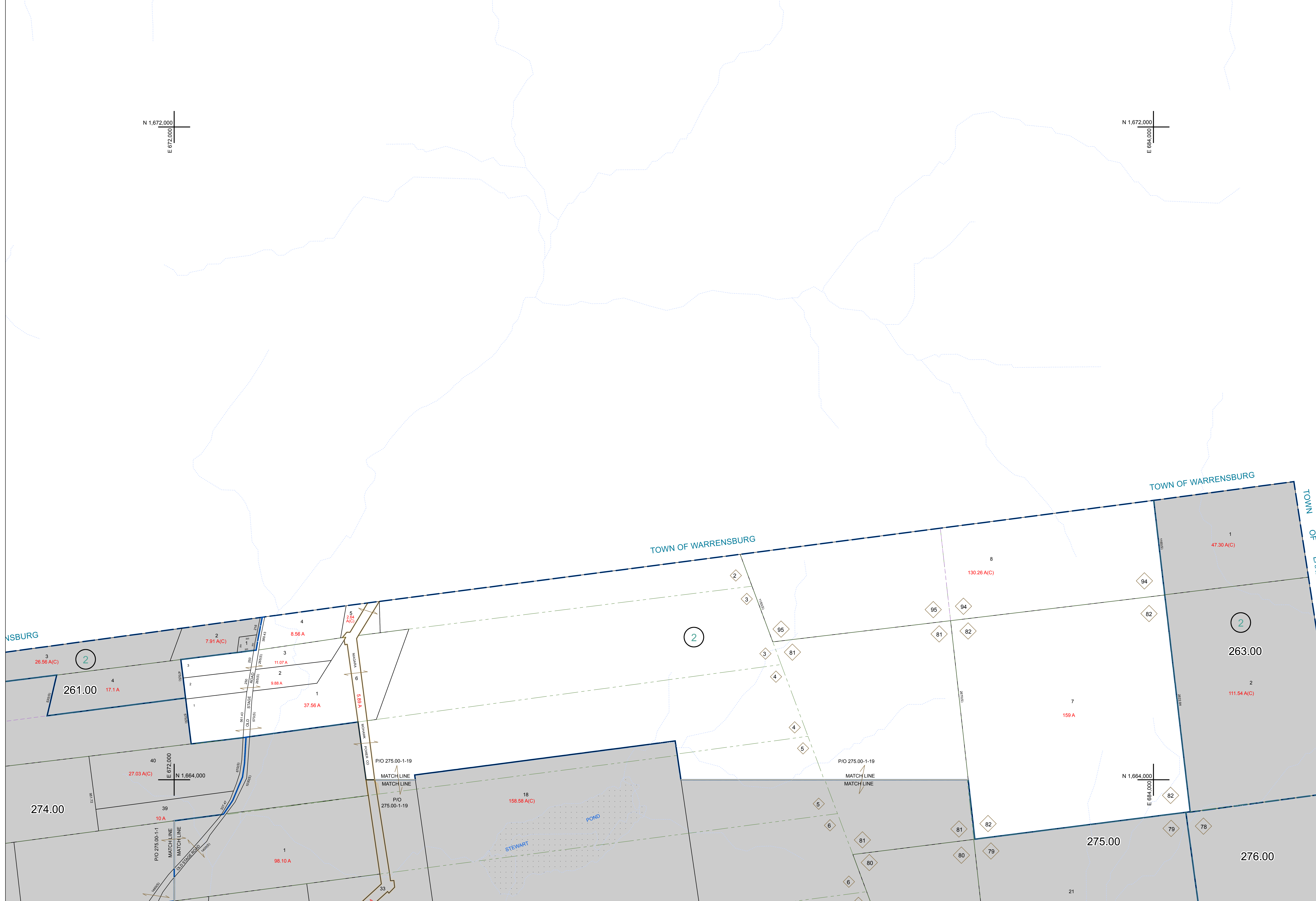


N 1,672,000  
E 672,000

N 1,672,000  
E 684,000



WARREN COUNTY REAL PROPERTY SERVICES  
LAKE GEORGE, NEW YORK

REVISION TABLE			
DATE	MADE BY	CHANGES OR ADDITIONS	

SPECIAL DISTRICTS	
PROPERTY LINE	---
ORIGINAL LOT LINE	---
RAILROAD	---
STREAM OR DITCH	---
ROAD OR RAILWAY BNDY	---
COUNTY LINE	---

LEGEND	
TOWN LINE	---
VILLAGE LINE	---
BLOCK LIMIT	---
GREAT LOT LINE	---
SCHOOL DISTRICT LINE	---
FIRE DISTRICT LINE	---
DNOTES COMMON OWNER	---
TAX MAP BLOCK NUMBER	---
TAX MAP PARCEL NUMBER	---
FILED PLAN LOT NUMBER	---

GREAT LOT NUMBER	
CALCULATED ACREAGE	78 (C)
DEED ACREAGE	178 A
SCALED DIMENSION	228 (B)
DEED DIMENSION	173.2

SHEET INDEX	
261.00	265.00
274.00	278.00

TAX MAP  
WARREN COUNTY, NEW YORK  
262.00  
SCALE: 1 inch = 400 feet  
DATE PRINTED: Apr 11, 2011