

N 1,672,000  
E 684,000

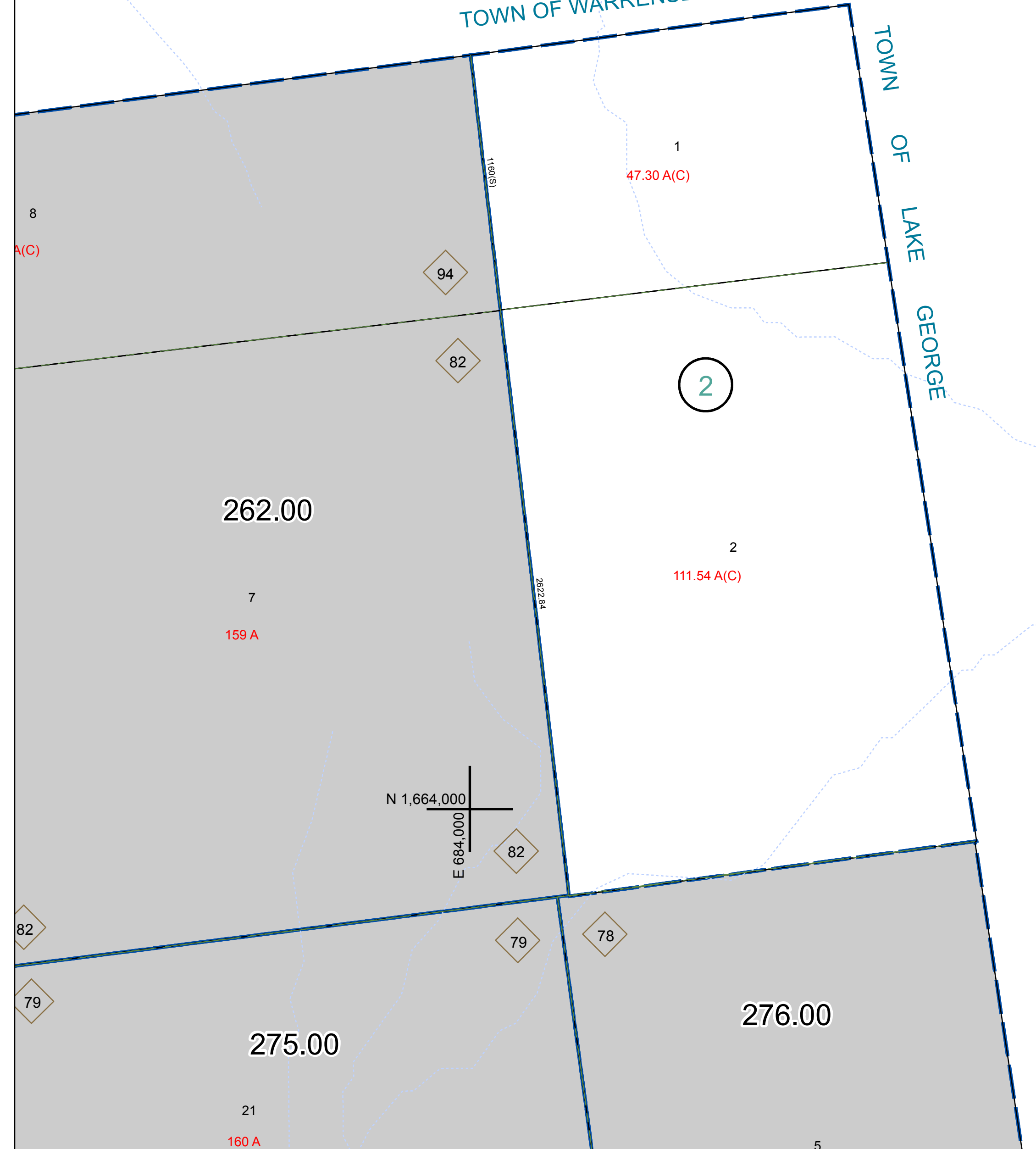
N 1,672,000  
E 686,000


N 1,664,000  
E 684,000

N 1,664,000  
E 686,000

TOWN OF WARRENSBURG

TOWN OF LAKE GEORGE




 PREPARED BY:  
**WARREN COUNTY REAL PROPERTY SERVICES**  
 LAKE GEORGE, NEW YORK

REVISION TABLE		
DATE	MADE BY	CHANGES OR ADDITIONS

SPECIAL DISTRICTS	

PROPERTY LINE	
ORIGINAL LOT LINE	---
RAILROAD	—+—+—+—+—+—+—+—+—+—
STREAM OR DITCH	~~~~~
ROAD OR RAILWAY BNDY	—+—+—+—+—+—+—+—+—+—
COUNTY LINE	---

TOWN LINE	
VILLAGE LINE	---
BLOCK LIMIT	---
GREAT LOT LINE	---
SCHOOL DISTRICT LINE	---

FIRE DISTRICT LINE	
DENOTES COMMON OWNER	---
TAX MAP BLOCK NUMBER	---
TAX MAP PARCEL NUMBER	---
FILED PLAN LOT NUMBER	---

LEGEND	
GREAT LOT NUMBER	78 (C)
CALCULATED ACREAGE	178 A
DEED ACREAGE	228 (B)
DEED DIMENSION	173.2

NORTH  
 COORDINATES BASED ON  
 NEW YORK STATE PLANE COORDINATE SYSTEM  
 EASTERN ZONE NAD 83

TAX MAP  
**TOWN OF LAKE LUZERNE**  
 WARREN COUNTY, NEW YORK  
 SCALE: 1 inch = 400 feet  
 DATE PRINTED: Apr 11, 2011

263.00