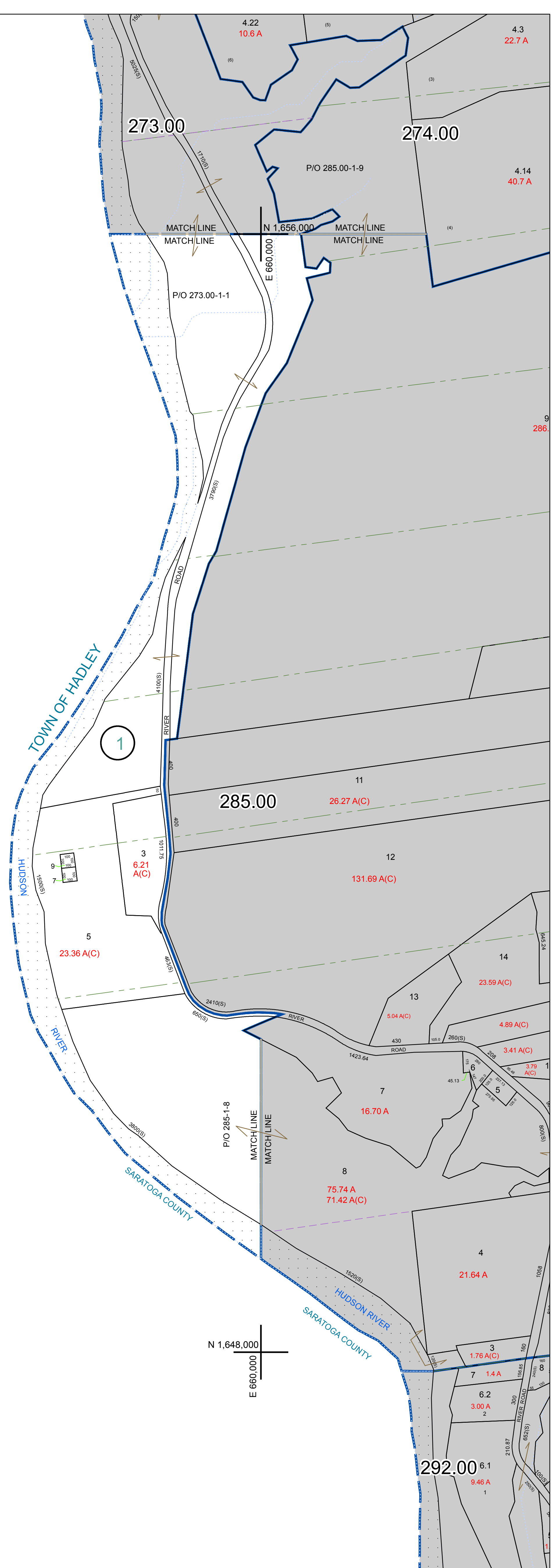



N 656.000  
E 648.000

N 1,648.000  
E 648.000




 PREPARED BY:  
**WARREN COUNTY REAL PROPERTY SERVICES**  
 LAKE GEORGE, NEW YORK

REVISION TABLE		
DATE	MADE BY	CHANGES OR ADDITIONS

SPECIAL DISTRICTS	

LEGEND	
PROPERTY LINE	—
ORIGINAL LOT LINE	- - - - -
RAILROAD	—+—+—+—
STREAM OR DITCH	~~~~~
ROAD OR RAILWAY BNDY	—+—+—+—
COUNTY LINE	—+—+—+—
TOWN LINE	—+—+—+—
VILLAGE LINE	—+—+—+—
BLOCK LIMIT	—+—+—+—
GREAT LOT LINE	—+—+—+—
SCHOOL DISTRICT LINE	—+—+—+—
FIRE DISTRICT LINE	—+—+—+—
DENOTES COMMON OWNER	—+—+—+—
TAX MAP BLOCK NUMBER	7
TAX MAP PARCEL NUMBER	76.00-1-11
FILED PLAN LOT NUMBER	(14)
GREAT LOT NUMBER	76 (C)
CALCULATED ACREAGE	176 A
DEED ACREAGE	226 (B)
DEED DIMENSION	173.2

NORTH  
 COORDINATES BASED ON  
 NEW YORK STATE PLANE COORDINATE SYSTEM  
 EASTERN ZONE NAD 83

SHEET INDEX	
273.00	274.00
285.00	286.00
291.00	292.00

**TAX MAP**  
**TOWN OF LAKE LUZERNE**  
 WARREN COUNTY, NEW YORK  
 SCALE: 1 inch = 400 feet  
 DATE PRINTED: Apr 11, 2011