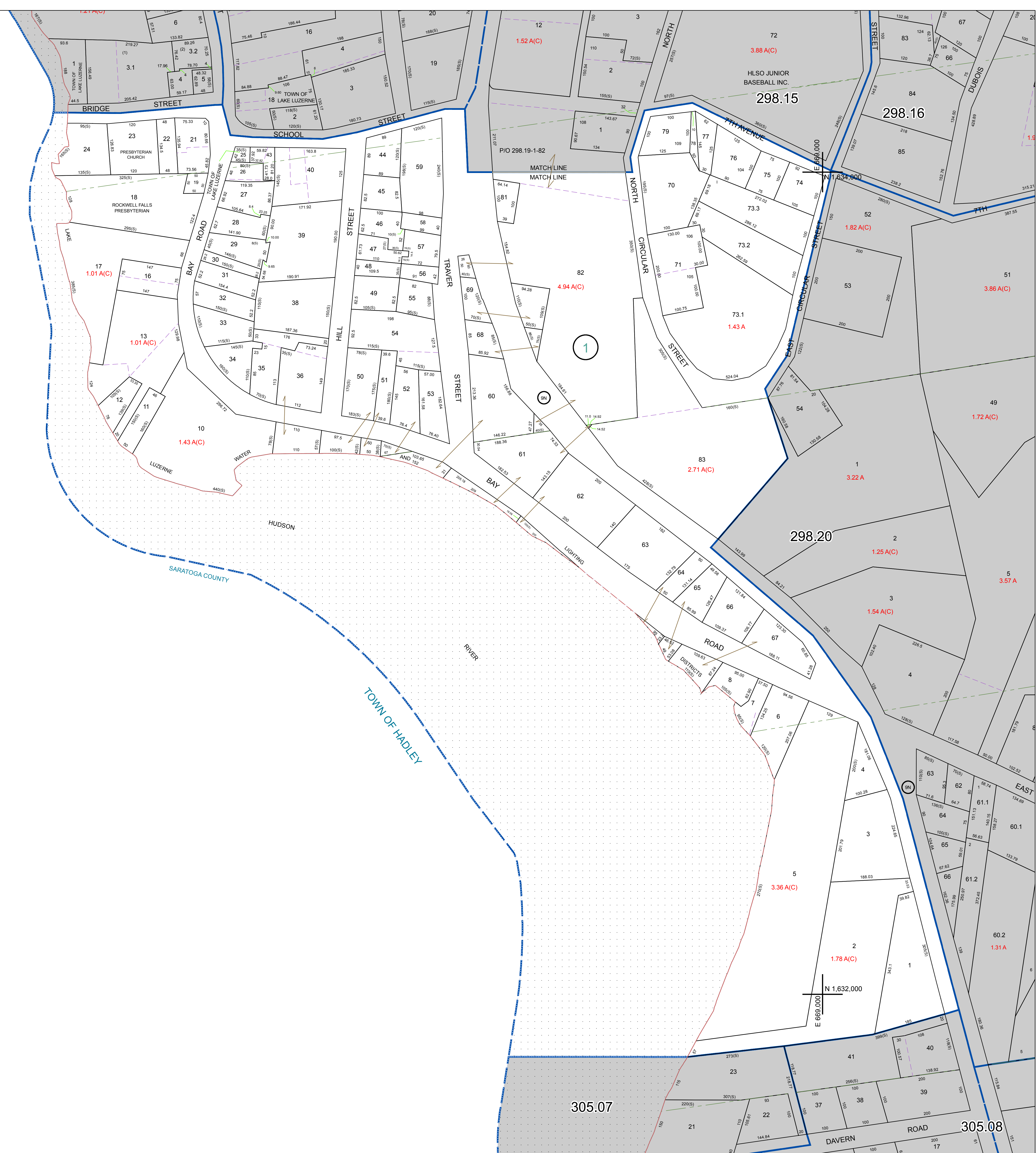


N 1,634,000
E 666,000

N 1,632,000
E 669,000



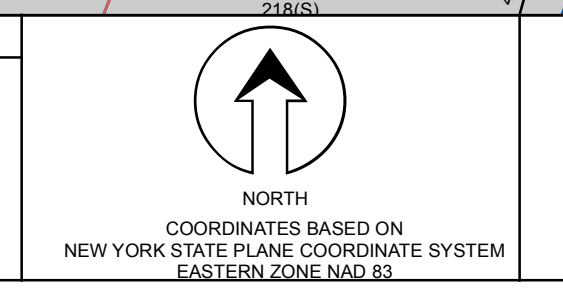
PREPARED BY:
WARREN COUNTY REAL PROPERTY SERVICES
LAKE GEORGE, NEW YORK

REVISION TABLE	
DATE	MADE BY
8/12/2009	P. DIXON
11/17/2009	P. DIXON

SPECIAL DISTRICTS	
PROPERTY LINE	--- (dashed)
ORIGINAL LOT LINE	- - - (long dashed)
RAILROAD	—+—+— (cross-ticks)
STREAM OR DITCH	~~~~~ (wavy)
ROAD OR RAILWAY ENDY	--- (dashed with dots)
COUNTY LINE	--- (dashed with dots)

LEGEND	
TOWN LINE	--- (dashed)
VILLAGE LINE	- - - (long dashed)
BLOCK LIMIT	--- (dashed)
GREAT LOT LINE	- - - (long dashed)
SCHOOL DISTRICT LINE	--- (dashed)
FIRE DISTRICT LINE	--- (dashed)
DENOTES COMMON OWNER	--- (dashed)
TAX MAP BLOCK NUMBER	7
TAX MAP PARCEL NUMBER	76.00-1-11
FILED PLAN LOT NUMBER	(14)

TAX MAP	
GREAT LOT NUMBER	76 (C)
CALCULATED ACREAGE	178 A
DEED ACREAGE	228 (B)
SCALED DIMENSION	173.2
DEED DIMENSION	173.2



SHEET INDEX	
298.05	298.15
298.06	298.16
305.07	305.08

TOWN OF LAKE LUZERNE
WARREN COUNTY, NEW YORK
SCALE: 1 inch = 100 feet
DATE PRINTED: Apr 11, 2011

THIS DOCUMENT PREPARED FOR TAX PURPOSES ONLY