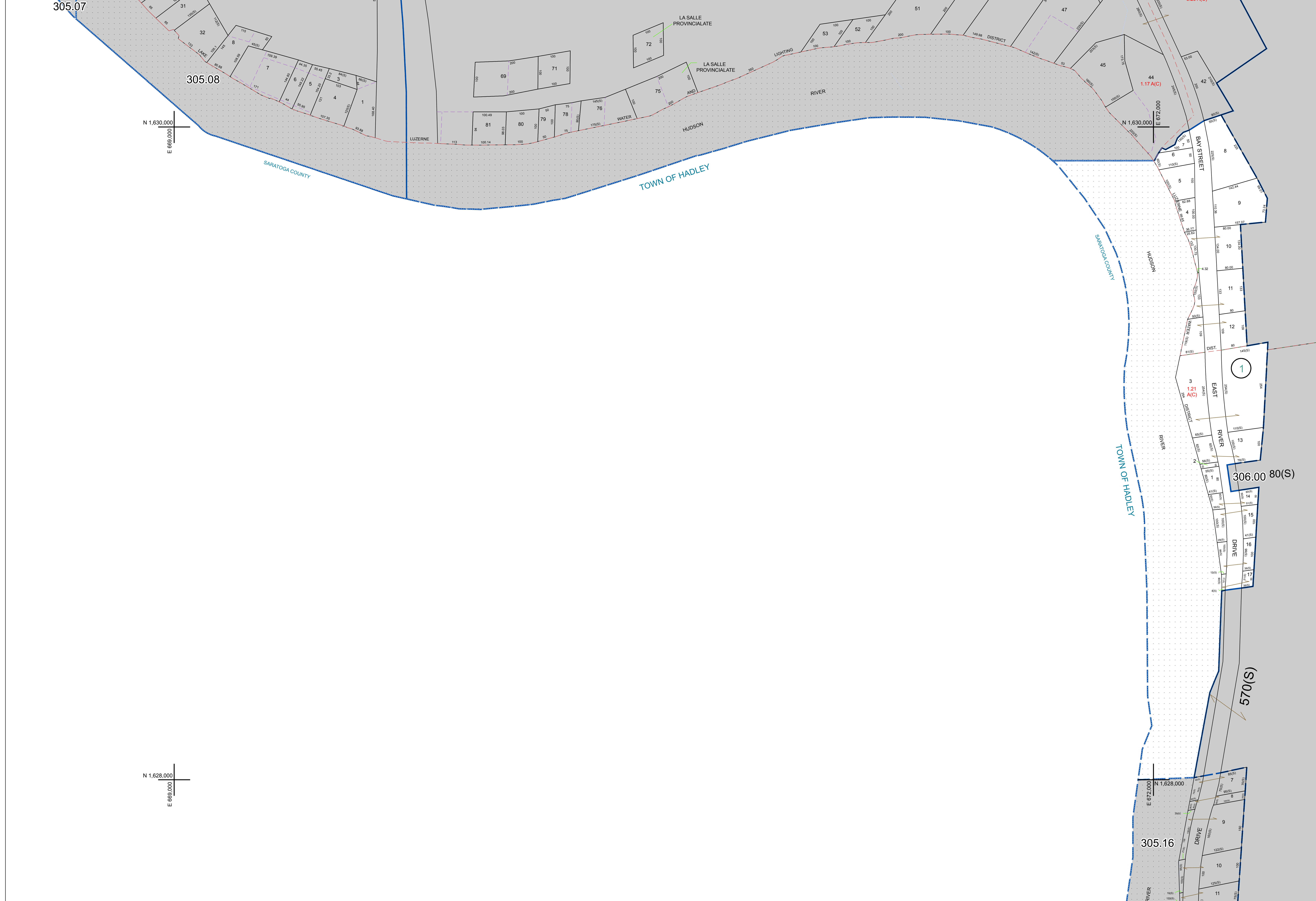


305.07

305.08

N 1,630,000
E 669,000

N 1,628,000
E 669,000



306.00 80(S)

570(S)

305.16

305.12



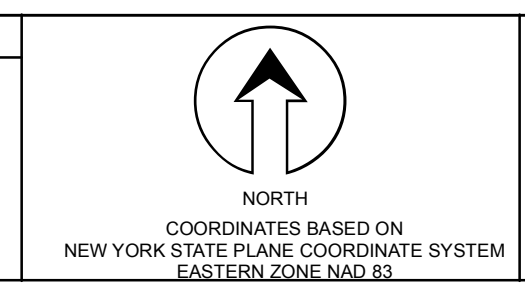
PREPARED BY:
WARREN COUNTY REAL PROPERTY SERVICES
LAKE GEORGE, NEW YORK

REVISION TABLE			
DATE	MADE BY	CHANGES OR ADDITIONS	
3/14/2010	S. DIXON	PARCELS 305.07-1-9, 10 & 11 REVISED BY AN UNFILED SURVEY FOR UNAPPORTIONED.	

SPECIAL DISTRICTS	
PROPERTY LINE	---
ORIGINAL LOT LINE	- - - - -
RAILROAD	====
STREAM OR DITCH	~~~~
ROAD OR RAILWAY ENDY	----
COUNTY LINE	----

LEGEND	
TOWN LINE	---
VILLAGE LINE	- - - - -
BLOCK LIMIT	----
GREAT LOT LINE	----
SCHOOL DISTRICT LINE	----
FIRE DISTRICT LINE	----
DENOTES COMMON OWNER	----
TAX MAP BLOCK NUMBER	7
TAX MAP PARCEL NUMBER	76.00-1-11
FILED PLAN LOT NUMBER	(14)

GREAT LOT NUMBER	76 (C)
CALCULATED ACREAGE	178 A
DEED ACREAGE	228 (B)
SCALED DIMENSION	173.2
DEED DIMENSION	173.2



SHEET INDEX		
305.07	305.08	305.09
305.10	305.11	305.12

TAX MAP
TOWN OF LAKE LUZERNE
WARREN COUNTY, NEW YORK

SCALE: 1 inch = 100 feet
DATE PRINTED: Apr 11, 2011