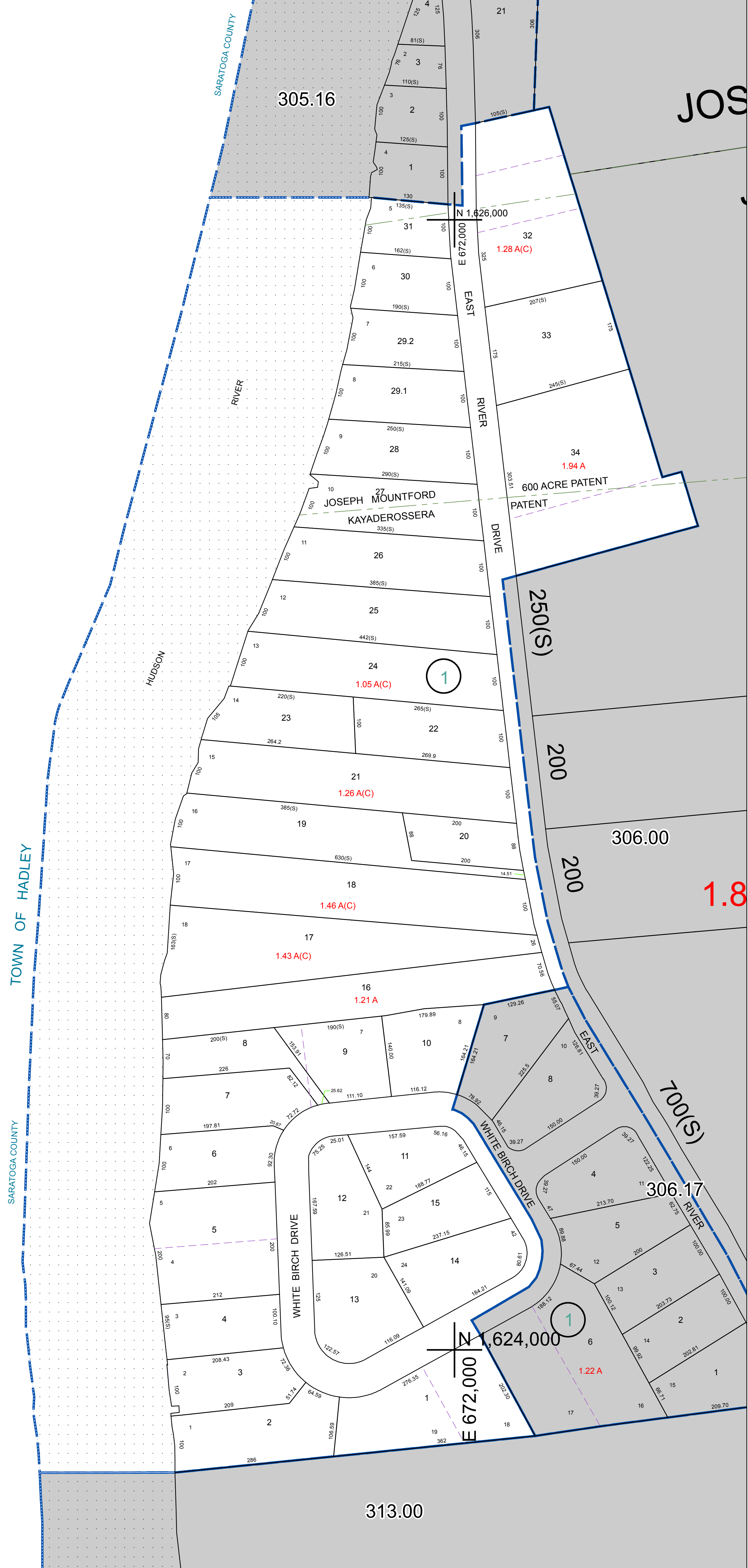



N 1,626,000
E 669,000

N 1,624,000
E 669,000



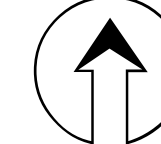

WARREN COUNTY REAL PROPERTY SERVICES
 LAKE GEORGE, NEW YORK
 PREPARED BY:

REVISION TABLE		
DATE	MADE BY	CHANGES OR ADDITIONS
10/27/2008	P. DIXON	SARCEL 101-20-1-09 0511 (BY DEED BOOK 1450 PAGE 244) NOW 305.20-1-20-1, 305.20-1-29-1 CREATED.

SPECIAL DISTRICTS	
PROPERTY LINE	—
ORIGINAL LOT LINE	- - - - -
RAILROAD	—+—+—+—
STREAM OR DITCH	~~~~~
ROAD OR RAILWAY BNDY	—+—+—+—
COUNTY LINE	—+—+—+—

LEGEND	
TOWN LINE	—+—+—+—
VILLAGE LINE	—+—+—+—
BLOCK LIMIT	—+—+—+—
GREAT LOT LINE	—+—+—+—
SCHOOL DISTRICT LINE	—+—+—+—
FIRE DISTRICT LINE	—+—+—+—
DENOTES COMMON OWNER	—+—+—+—
TAX MAP BLOCK NUMBER	7
TAX MAP PARCEL NUMBER	76.00-1-11
FILED PLAN LOT NUMBER	(14)

LEGEND	
GREAT LOT NUMBER	305.16
CALCULATED ACREAGE	76 (C)
DEED ACREAGE	76 A
SCALED DIMENSION	228 (S)
DEED DIMENSION	173.2


 NORTH
 COORDINATES BASED ON
 NEW YORK STATE PLANE COORDINATE SYSTEM
 EASTERN ZONE NAD 83

SHEET INDEX	
305.16	305.00
306.17	306.00
313.05	313.00

TOWN OF LAKE LUZERNE
 WARREN COUNTY, NEW YORK
 TAX MAP
 305.20
 SCALE: 1 inch = 100 feet
 DATE PRINTED: Apr 11, 2011

THIS DOCUMENT PREPARED FOR TAX PURPOSES ONLY