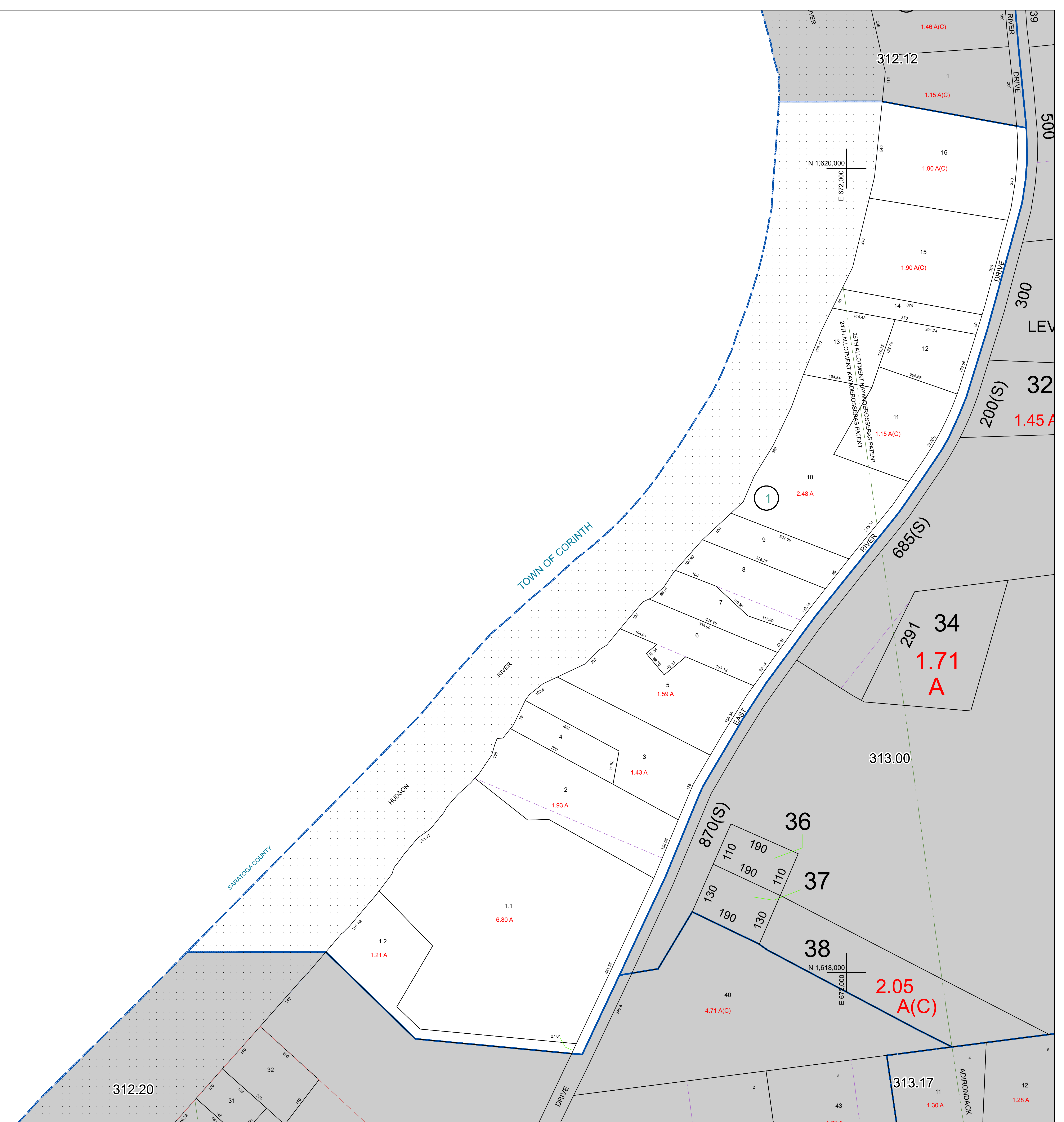



N 1,620,000
E 672,000

N 1,618,000
E 669,000



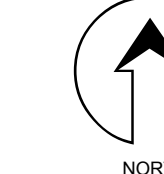

 PREPARED BY:
WARREN COUNTY REAL PROPERTY SERVICES
 LAKE GEORGE, NEW YORK

REVISION TABLE		
DATE	MADE BY	CHANGES OR ADDITIONS

SPECIAL DISTRICTS	
PROPERTY LINE	—
ORIGINAL LOT LINE	- - - - -
RAILROAD	—+—+—+—
STREAM OR DITCH	~~~~~
ROAD OR RAILWAY BNDY	—+—+—+—
COUNTY LINE	—+—+—+—

LEGEND	
TOWN LINE	—+—+—+—
VILLAGE LINE	—+—+—+—
BLOCK LIMIT	—+—+—+—
GREAT LOT LINE	—+—+—+—
SCHOOL DISTRICT LINE	—+—+—+—
FIRE DISTRICT LINE	—+—+—+—
DENOTES COMMON OWNER	—+—+—+—
TAX MAP BLOCK NUMBER	7
TAX MAP PARCEL NUMBER	76.00-1-11
FILED PLAN LOT NUMBER	(14)

GREAT LOT NUMBER	110
CALCULATED ACREAGE	78 (C)
DEED ACREAGE	178 A
SCALED DIMENSION	228 (B)
DEED DIMENSION	173.2


 NORTH
 COORDINATES BASED ON
 NEW YORK STATE PLANE COORDINATE SYSTEM
 EASTERN ZONE NAD 83

SHEET INDEX	
312.12	313.09
312.20	313.17

TAX MAP **312.16**
TOWN OF LAKE LUZERNE
 WARREN COUNTY, NEW YORK
 SCALE: 1 inch = 100 feet
 DATE PRINTED: Apr 11, 2011

THIS DOCUMENT PREPARED FOR TAX PURPOSES ONLY